

BCL-2 (Phospho-Thr69) Antibody

Catalog No: #12036

Package Size: #12036-1 50ul #12036-2 100ul

Orders: order@signalwayantibody.comSupport: tech@signalwayantibody.com

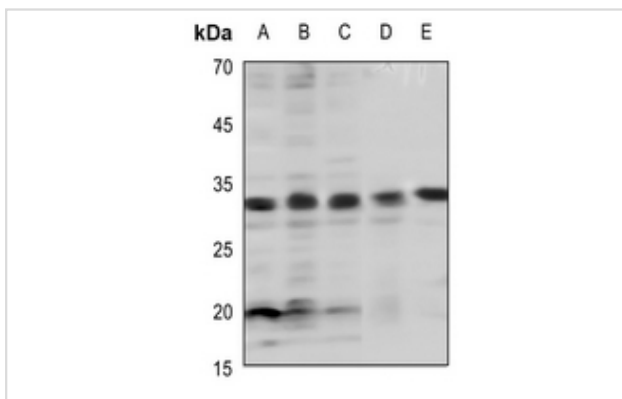
Description

Product Name	BCL-2 (Phospho-Thr69) Antibody
Host Species	Rabbit
Clonality	Polyclonal
Purification	Antibodies were produced by immunizing rabbits with synthetic phosphopeptide and KLH conjugates. Antibodies were purified by affinity-chromatography using epitope-specific phosphopeptide. Non-phospho specific antibodies were removed by chromatography using non-phosphopeptide.
Applications	WB, IH, ELISA
Species Reactivity	Hu
Specificity	The antibody detects endogenous level of BCL-2 only when phosphorylated at Threonine 69.
Immunogen Type	Peptide-KLH
Immunogen Description	Peptide sequence around phosphorylation site of Threonine 69 (A-R-T(p)-S-P) derived from Human BCL-2.
Target Name	BCL-2
Modification	Phospho
Other Names	PPP1R50, BCL2
Accession No.	Swiss-Prot#: P10415; NCBI Gene#: 596; NCBI Protein#: NP_000624.2
Uniprot	P10415
GeneID	596;
SDS-PAGE MW	26kd
Concentration	1.0mg/ml
Formulation	Liquid in 0.42% Potassium phosphate, 0.87% Sodium chloride, pH 7.3, 30% glycerol, and 0.01% sodium azide.
Storage	Store at -20°C/1 year

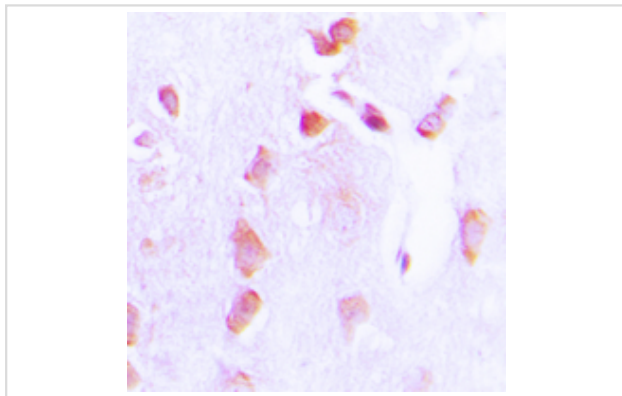
Application Details

WB (1/500 - 1/1000), IH (1/100 - 1/200)

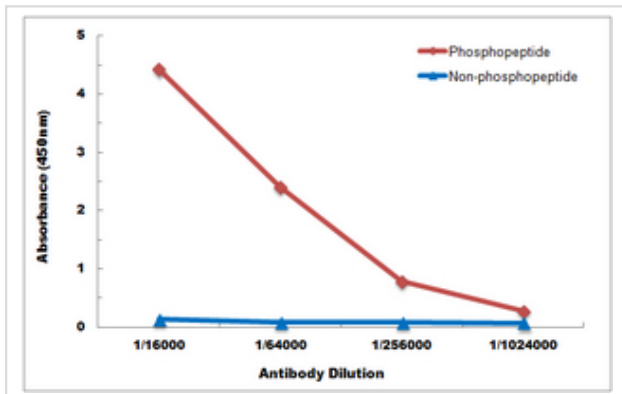
Images



Western blot analysis of BCL2 (pT69) expression in HEK293T (A), K562 (B), A549 (C), rat kidney (D), rat muscle (E) whole cell lysates.



Immunohistochemical analysis of BCL2 (pT69) staining in human brain formalin fixed paraffin embedded tissue section. The section was pre-treated using heat mediated antigen retrieval with sodium citrate buffer (pH 6.0). The section was then incubated with the antibody at room temperature and detected using an HRP conjugated compact polymer system. DAB was used as the chromogen. The section was then counterstained with haematoxylin and mounted with DPX.



Direct ELISA antibody dose-response curve using Anti-BCL2 (pT69) Antibody. Antigen (phosphopeptide and non-phosphopeptide) concentration is 5 ug/ml. Goat Anti-Rabbit IgG (H&L) - HRP was used as the secondary antibody, and signal was developed by TMB substrate.

Background

Suppresses apoptosis in a variety of cell systems including factor-dependent lymphohematopoietic and neural cells. Regulates cell death by controlling the mitochondrial membrane permeability. Appears to function in a feedback loop system with caspases. Inhibits caspase activity either by preventing the release of cytochrome c from the mitochondria and/or by binding to the apoptosis-activating factor (APAF-1).

Note: This product is for in vitro research use only