

## Keratin 8 (Phospho-Ser432) Antibody

Catalog No: #12042

Package Size: #12042-1 50ul #12042-2 100ul

Orders: [order@signalwayantibody.com](mailto:order@signalwayantibody.com)Support: [tech@signalwayantibody.com](mailto:tech@signalwayantibody.com)

## Description

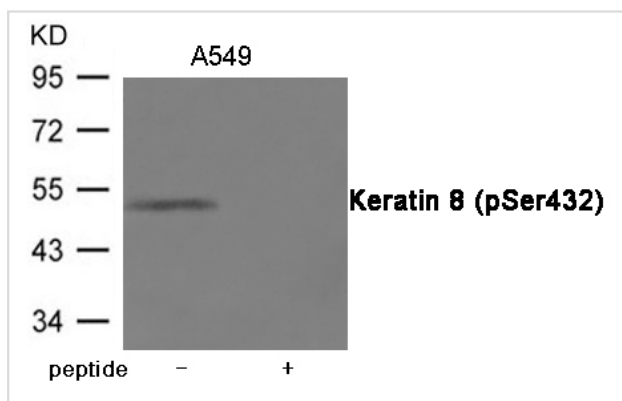
Product Name	Keratin 8 (Phospho-Ser432) Antibody
Host Species	Rabbit
Clonality	Polyclonal
Purification	Antibodies were produced by immunizing rabbits with synthetic phosphopeptide and KLH conjugates. Antibodies were purified by affinity-chromatography using epitope-specific phosphopeptide. Non-phospho specific antibodies were removed by chromatography using non-phosphopeptide.
Applications	WB
Species Reactivity	Hu
Specificity	The antibody detects endogenous level of Keratin 8 only when phosphorylated at Serine 432.
Immunogen Type	Peptide-KLH
Immunogen Description	Peptide sequence around phosphorylation site of Serine 432 (L-T-S(p)-P-G) derived from Human Keratin 8.
Target Name	Keratin 8
Modification	Phospho
Other Names	K8, KO, CK8, CYK8, CK-8
Accession No.	Swiss-Prot#: P05787; NCBI Gene#: 3856; NCBI Protein#: NP_001243211.1
Uniprot	P05787
GeneID	3856;
SDS-PAGE MW	53kd
Concentration	1.0mg/ml
Formulation	Supplied at 1.0mg/mL in phosphate buffered saline (without Mg <sup>2+</sup> and Ca <sup>2+</sup> ), pH 7.4, 150mM NaCl, 0.02% sodium azide and 50% glycerol.
Storage	Store at -20°C/1 year

## Application Details

Predicted MW: 53kd

Western blotting: 1:500~1:1000

## Images



Western blot analysis of extracts from A549 cells using Keratin 8 (Phospho-Ser432) Antibody #12042. The lane on the right is treated with the antigen-specific peptide.

## Background

Together with KRT19, helps to link the contractile apparatus to dystrophin at the costameres of striated muscle.

Note: This product is for in vitro research use only