

IL-8R beta/CDw128 beta (Phospho-Ser347) Antibody

Catalog No: #12051



Package Size: #12051-1 50ul #12051-2 100ul

Orders: order@signalwayantibody.comSupport: tech@signalwayantibody.com

Description

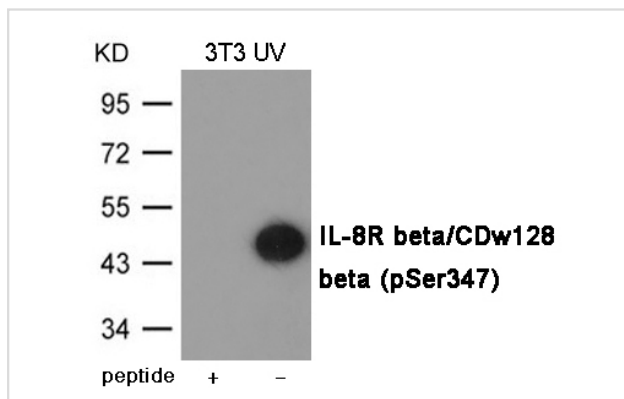
Product Name	IL-8R beta/CDw128 beta (Phospho-Ser347) Antibody
Host Species	Rabbit
Clonality	Polyclonal
Purification	Antibodies were produced by immunizing rabbits with synthetic phosphopeptide and KLH conjugates. Antibodies were purified by affinity-chromatography using epitope-specific phosphopeptide. Non-phospho specific antibodies were removed by chromatography using non-phosphopeptide.
Applications	WB
Species Reactivity	Hu Ms
Specificity	The antibody detects endogenous level of IL-8R beta/CDw128 beta only when phosphorylated at Serine 347.
Immunogen Type	Peptide-KLH
Immunogen Description	Peptide sequence around phosphorylation site of Serine 347 (R-P-S(p)-F-V) derived from Human IL-8R beta/CDw128 beta
Target Name	IL-8R beta/CDw128 beta
Modification	Phospho
Other Names	CD182, IL8R2, IL8RA, IL8RB, CMKAR2
Accession No.	Swiss-Prot#: P25025; NCBI Gene#: 3579; NCBI Protein#: NP_001161770.1
Uniprot	P25025
GeneID	3579;
SDS-PAGE MW	48kd
Concentration	1.0mg/ml
Formulation	Supplied at 1.0mg/mL in phosphate buffered saline (without Mg ²⁺ and Ca ²⁺), pH 7.4, 150mM NaCl, 0.02% sodium azide and 50% glycerol.
Storage	Store at -20°C/1 year

Application Details

Predicted MW: 48kd

Western blotting: 1:500~1:1000

Images



Western blot analysis of extracts from 3T3 cells treated with UV using IL-8R beta/CDw128 beta (Phospho-Ser347) Antibody #12051. The lane on the left is treated with the antigen-specific peptide.

Background

Receptor for interleukin-8 which is a powerful neutrophil chemotactic factor. Binding of IL-8 to the receptor causes activation of neutrophils. This response is mediated via a G-protein that activates a phosphatidylinositol-calcium second messenger system. Binds to IL-8 with high affinity. Also binds with high affinity to CXCL3, GRO/MGSA and NAP-2.

Note: This product is for in vitro research use only