

B-RAF (Phospho-Ser446) Antibody

Catalog No: #12064

Package Size: #12064-1 50ul #12064-2 100ul

Orders: order@signalwayantibody.comSupport: tech@signalwayantibody.com

Description

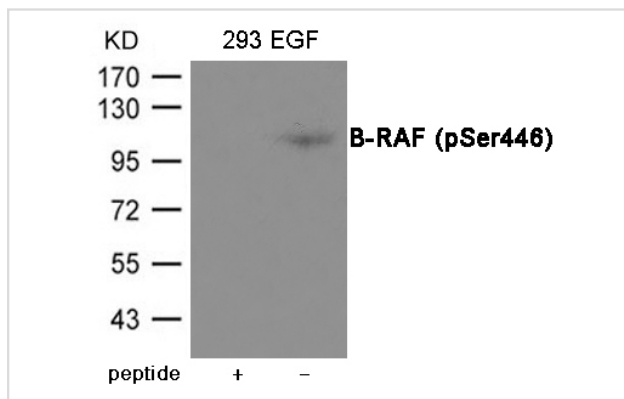
Product Name	B-RAF (Phospho-Ser446) Antibody
Host Species	Rabbit
Clonality	Polyclonal
Purification	Antibodies were produced by immunizing rabbits with synthetic phosphopeptide and KLH conjugates. Antibodies were purified by affinity-chromatography using epitope-specific phosphopeptide. Non-phospho specific antibodies were removed by chromatography using non-phosphopeptide.
Applications	WB
Species Reactivity	Hu Ms Rt
Specificity	The antibody detects endogenous level of B-RAF only when phosphorylated at Serine 446.
Immunogen Type	Peptide-KLH
Immunogen Description	Peptide sequence around phosphorylation site of Serine 446 (R-D-S(p)-S-D) derived from Human B-RAF.
Target Name	B-RAF
Modification	Phospho
Other Names	NS7, BRAF1, RAFB1, B-RAF1
Accession No.	Swiss-Prot#: P15056; NCBI Gene#: 673; NCBI Protein#: NP_004324.2
Uniprot	P15056
GeneID	673;
SDS-PAGE MW	110kd
Concentration	1.0mg/ml
Formulation	Supplied at 1.0mg/mL in phosphate buffered saline (without Mg ²⁺ and Ca ²⁺), pH 7.4, 150mM NaCl, 0.02% sodium azide and 50% glycerol.
Storage	Store at -20°C/1 year

Application Details

Predicted MW: 110kd

Western blotting: 1:500~1:1000

Images



Western blot analysis of extracts from 293 cells treated with EGF using B-RAF (Phospho-Ser446) Antibody #12064. The lane on the left is treated with the antigen-specific peptide.

Background

Involved in the transduction of mitogenic signals from the cell membrane to the nucleus. May play a role in the postsynaptic responses of hippocampal neuron.

Note: This product is for in vitro research use only