

cdc25A(Ab-76) Antibody

Catalog No: #21163

Package Size: #21163-1 50ul #21163-2 100ul

Orders: order@signalwayantibody.com

Support: tech@signalwayantibody.com

Description

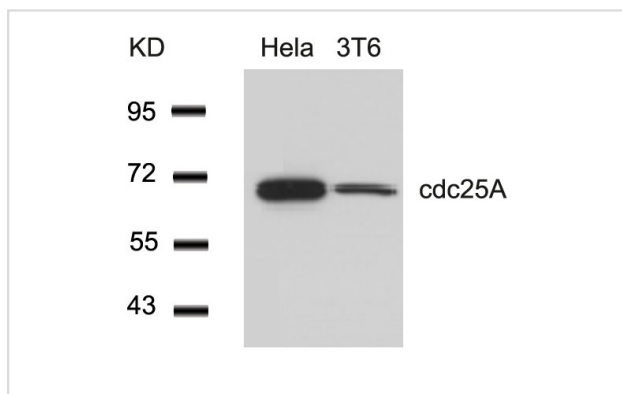
| | |
|-----------------------|---|
| Product Name | cdc25A(Ab-76) Antibody |
| Host Species | Rabbit |
| Clonality | Polyclonal |
| Purification | Antibodies were produced by immunizing rabbits with synthetic peptide and KLH conjugates. Antibodies were purified by affinity-chromatography using epitope-specific peptide. |
| Applications | WB |
| Species Reactivity | Hu Ms |
| Specificity | The antibody detects endogenous level of total cdc25A protein. |
| Immunogen Type | Peptide-KLH |
| Immunogen Description | Peptide sequence around aa. 73~77 (M-G-S-S-E) derived from Human cdc25A. |
| Target Name | cdc25A |
| Other Names | CDC25M3; MPIP1; |
| Accession No. | Swiss-Prot: P30304NCBI Protein: NP_001780.2 |
| Uniprot | P30304 |
| GeneID | 993; |
| Concentration | 1.0mg/ml |
| Formulation | Supplied at 1.0mg/mL in phosphate buffered saline (without Mg ²⁺ and Ca ²⁺), pH 7.4, 150mM NaCl, 0.02% sodium azide and 50% glycerol. |
| Storage | Store at -20°C for long term preservation (recommended). Store at 4°C for short term use. |

Application Details

Predicted MW: 70kd

Western blotting: 1:500~1:1000

Images



Western blot analysis of extracts from HeLa and 3T6 cells using cdc25A(Ab-76) Antibody #21163.

Background

Tyrosine protein phosphatase which functions as a dosage-dependent inducer of mitotic progression. Directly dephosphorylates CDC2 and stimulates its kinase activity. Also dephosphorylates CDK2 in complex with cyclin E, in vitro.

Jin J, et al. (2003) *Genes* 17(24): 3062-74.

Shimuta K, et al. (2002) *EMBO J* 21(14): 3694-703.

Note: This product is for in vitro research use only