

Bmi1 Monoclonal Antibody

Catalog No: #27170

Package Size: #27170-1 50ul #27170-2 100ul

Orders: order@signalwayantibody.com

Support: tech@signalwayantibody.com

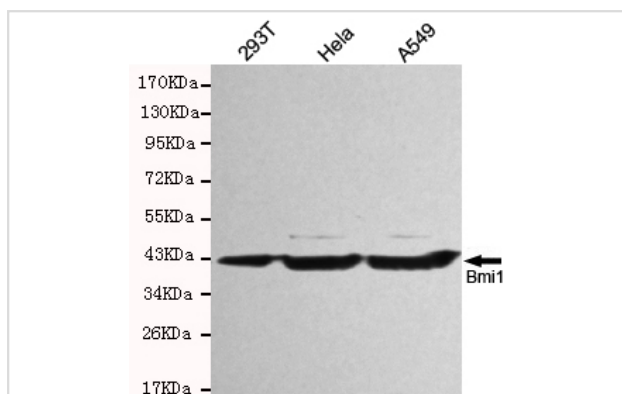
Description

Product Name	Bmi1 Monoclonal Antibody
Host Species	Mouse
Clonality	Monoclonal
Clone No.	10B1-D1
Isotype	IgG1
Purification	Affinity purified
Applications	WB
Species Reactivity	Hu
Specificity	This antibody detects endogenous levels of Bmi1 and does not cross-react with related proteins.
Immunogen Type	Recombinant Protein
Immunogen Description	Purified recombinant human Bmi1 protein fragments expressed in E.coli.
Target Name	Bmi1
Other Names	B lymphoma Mo MLV insertion region (mouse); B lymphoma Mo MLV insertion region 1 homolog;Bmi 1; BMI1; BMI1 polycomb ring finger oncogene; BMI1_HUMAN; FLi 2/bmi 1; FLVI2/BMI1; MGC12685; Murine leukemia viral (bmi 1) oncogene homolog;Oncogene BMI 1; PCGF 4
Accession No.	UniProt: P35226 Gene ID: 648
Uniprot	P35226
GeneID	100532731;648;
SDS-PAGE MW	43kd
Formulation	Purified mouse monoclonal in buffer containing 0.1M Tris-Glycine(pH 7.4, 150 mM NaCl)with 0.2% sodium azide,0.1mg/mlBSA and 50% glycerol.
Storage	store at -20A C

Application Details

Western blotting: 1:1000

Images



Western blot detection of Bmi1 antibody in HeLa,A549 and 293T cell lysates using Bmi1 antibody (1:1000 diluted).Predicted band size:43KDa.Observed band size:43KDa.

Background

Component of a Polycomb group (PcG) multiprotein PRC1-like complex, a complex class required to maintain the transcriptionally repressive state of many genes, including Hox genes, throughout development. PcG PRC1 complex acts via chromatin remodeling and modification of histones; it mediates monoubiquitination of histone H2A 'Lys-119', rendering chromatin heritably changed in its expressibility. In the PRC1 complex, it is required to stimulate the E3 ubiquitin-protein ligase activity of RNF2/RING2.

Note: This product is for in vitro research use only