

## Musashi-1 Monoclonal Antibody

Catalog No: #27184

Package Size: #27184-1 50ul #27184-2 100ul

Orders: order@signalwayantibody.com

Support: tech@signalwayantibody.com

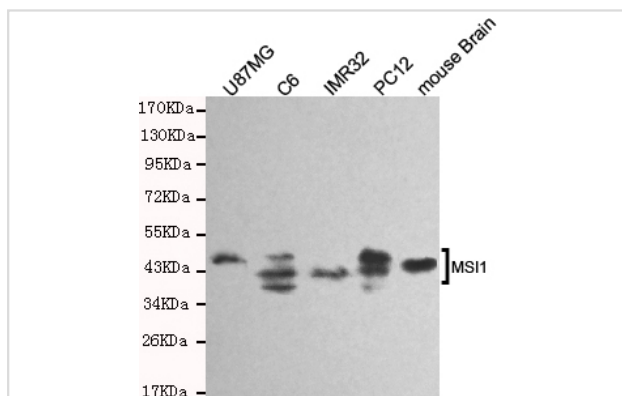
## Description

Product Name	Musashi-1 Monoclonal Antibody
Host Species	Mouse
Clonality	Monoclonal
Clone No.	3F8-E6-B9
Isotype	IgG2b
Purification	Affinity purified
Applications	WB
Species Reactivity	Hu Ms Rt
Specificity	This antibody detects endogenous levels of MSI1 and does not cross-react with related proteins.
Immunogen Type	Recombinant Protein
Immunogen Description	Purified recombinant human MSI1 protein fragments expressed in E.coli.
Target Name	Musashi-1
Other Names	musashi homolog 1 (Drosophila); Musashi (Drosophila) homolog 1; musashi-1; musashi1; RNA-binding protein Musashi homolog 1; Musashi-1; MSI1;
Accession No.	Uniprot: O43347 Gene ID: 4440
Uniprot	O43347
GeneID	4440;
SDS-PAGE MW	39kd
Formulation	Purified mouse monoclonal in PBS(pH 7.4) containing with 0.2% sodium azide, 50% glycerol, 0.1%BSA
Storage	store at -20Λ C

## Application Details

Western blotting: 1:1000

## Images



Western blot detection of MSI1 in U87MG,C6,IMR32,mouse brain&PC12 cell lysates and using MSI1 antibody (1:1000 diluted). Predicted band size: 39KDa Observed band size:39KDa

## Background

---

RNA binding protein that regulates the expression of target mRNAs at the translation level. Regulates expression of the NOTCH1 antagonist NUMB. Binds RNA containing the sequence 5'-GUUAGUUAGUUAGUU-3' and other sequences containing the pattern 5'-[GA]U1-3AGU-3'. May play a role in the proliferation and maintenance of stem cells in the central nervous system

---

Note: This product is for in vitro research use only