

CBR1 Monoclonal Antibody

Catalog No: #27187

Package Size: #27187-1 50ul #27187-2 100ul

Orders: order@signalwayantibody.com

Support: tech@signalwayantibody.com

Description

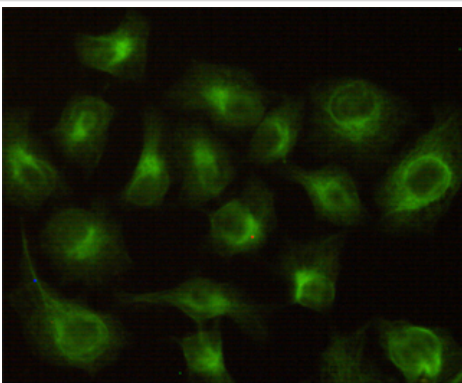
Product Name	CBR1 Monoclonal Antibody
Host Species	Mouse
Clonality	Monoclonal
Clone No.	2C9-B12-C4
Isotype	IgG1
Purification	Affinity purified
Applications	WB ICC
Species Reactivity	Hu
Specificity	This antibody detects endogenous levels of CBR1, and does not cross-react with related proteins.
Immunogen Type	Recombinant Protein
Immunogen Description	Purified recombinant human CBR1 protein fragments expressed in E.coli
Target Name	CBR1
Other Names	15 hydroxyprostaglandin dehydrogenase [NADP+]; 15-hydroxyprostaglandin dehydrogenase [NADP+]; Carbonyl reductase [NADPH] 1; Carbonyl Reductase 1; CBR 1; CBR1; CBR1_HUMAN; CRN; NADPH dependent carbonyl reductase 1; NADPH-dependent carbonyl reductase 1;
Accession No.	Uniprot: P16152 Gene ID: 873
Uniprot	P16152
GeneID	873;
SDS-PAGE MW	30kd
Formulation	Purified mouse monoclonal in PBS(pH 7.4)containing with 0.2% sodium azide,50% glycerol.
Storage	store at -20Λ C

Application Details

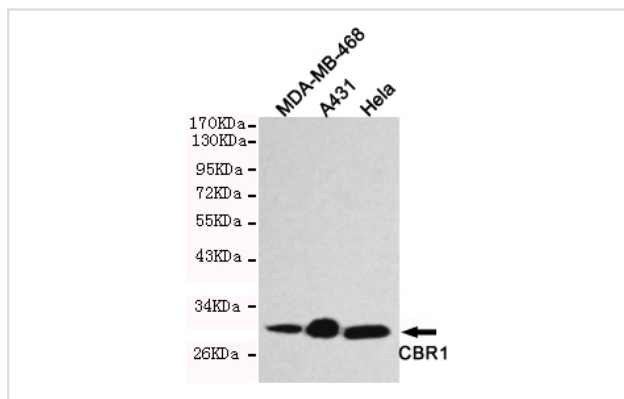
Western blotting: 1:1000

Immunocytochemistry: 1:100

Images



Immunocytochemistry stain of HeLa using CBR1 antibody (1:100).



Western blot detection of CBR1 in HeLa, A431 & MDA-MB-468 cell lysates using CBR1 antibody (1:1000 diluted). Predicted band size: 30KDa, Observed band size: 30KDa.

Background

NADPH-dependent reductase with broad substrate specificity. Catalyzes the reduction of a wide variety of carbonyl compounds including quinones, prostaglandins, menadione, plus various xenobiotics. Catalyzes the reduction of the antitumor anthracyclines doxorubicin and daunorubicin to the cardiotoxic compounds doxorubicinol and daunorubicinol. Can convert prostaglandin E2 to prostaglandin F2-alpha. Can bind glutathione, which explains its higher affinity for glutathione-conjugated substrates. Catalyzes the reduction of S-nitrosoglutathione.

Note: This product is for in vitro research use only