

FHL2 Antibody

Catalog No: #21692

Package Size: #21692-1 50ul #21692-2 100ul

Orders: order@signalwayantibody.com

Support: tech@signalwayantibody.com

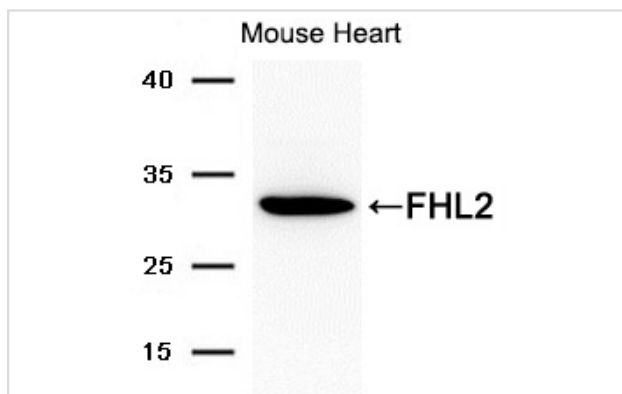
Description

Product Name	FHL2 Antibody
Host Species	Rabbit
Clonality	Polyclonal
Purification	Antibodies were produced by immunizing rabbits with synthetic peptide and KLH conjugates. Antibodies were purified by affinity-chromatography using epitope-specific peptide.
Applications	WB
Species Reactivity	Hu Ms
Specificity	The antibody detects endogenous level of total FHL2 protein.
Immunogen Type	Peptide-KLH
Immunogen Description	Peptide sequence around aa.16~28 (I-L-R-E-E) derived from Human FHL2.
Target Name	FHL2
Other Names	SLIM3; AAG11; FHL-2; DRAL; aging-associated gene 11
Accession No.	Swiss-Prot: Q14192 NCBI Protein: NP_001034581.1
Uniprot	Q14192
GeneID	2274;
SDS-PAGE MW	32kd
Concentration	1.0mg/ml
Formulation	Supplied at 1.0mg/mL in phosphate buffered saline (without Mg ²⁺ and Ca ²⁺), pH 7.4, 150mM NaCl, 0.02% sodium azide and 50% glycerol.
Storage	Store at -20°C

Application Details

Western blotting: 1:5000½ 1:1000

Images



Western blot analysis of extracts from mouse brain tissue using FLH2 AntibodyB #21692.

Background

May function as a molecular transmitter linking various signaling pathways to transcriptional regulation. Negatively regulates the transcriptional repressor E4F1 and may function in cell growth. Inhibits the transcriptional activity of FOXO1 and its apoptotic function by enhancing the interaction of FOXO1 with SIRT1 and FOXO1 deacetylation.

Genini M., Schwalbe P., Scholl F.A., Remppis A., Mattei M.-G., Schaefer B.W. *DNA Cell Biol.* 16:433-442(1997)

Tanahashi H., Tabira T. *Hum. Mol. Genet.* 9:2281-2289(2000)

Note: This product is for in vitro research use only