

HER2 (Phospho-Tyr1112) Antibody

Catalog No: #11903

Package Size: #11903-1 50ul #11903-2 100ul

Orders: order@signalwayantibody.com

Support: tech@signalwayantibody.com

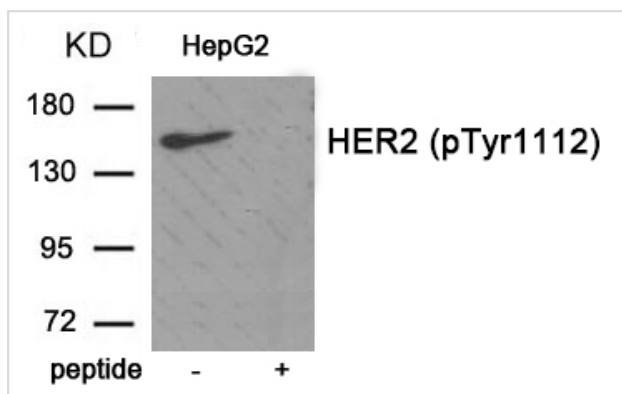
Description

Product Name	HER2 (Phospho-Tyr1112) Antibody
Host Species	Rabbit
Clonality	Polyclonal
Purification	Antibodies were produced by immunizing rabbits with synthetic phosphopeptide and KLH conjugates. Antibodies were purified by affinity-chromatography using epitope-specific phosphopeptide. Non-phospho specific antibodies were removed by chromatography using non-phosphopeptide.
Applications	WB
Species Reactivity	Hu
Specificity	The antibody detects endogenous level of HER2 only when phosphorylated at tyrosine 1112.
Immunogen Type	Peptide-KLH
Immunogen Description	Peptide sequence around phosphorylation site of tyrosine 1112 (Q-R-Y(p)-S-E) derived from Human HER2.
Target Name	HER2
Modification	Phospho
Other Names	C-erbB-2; NGL; NEU proto-oncogene; MLN 19;
Accession No.	Swiss-Prot#: P04626; NCBI Gene#: 2064; NCBI Protein#: NP_001005862.1
Uniprot	P04626
GeneID	2064;
SDS-PAGE MW	150kd
Concentration	1.0mg/ml
Formulation	Rabbit IgG in phosphate buffered saline (without Mg ²⁺ and Ca ²⁺), pH 7.4, 150mM NaCl, 0.02% sodium azide and 50% glycerol.
Storage	Store at -20°C/1 year

Application Details

Western blotting: 1:500~1:1000

Images



Western blot analysis of extracts from HepG2 tissue using HER2 (Phospho-Tyr1112) antibody #11903. The lane on the right is treated with the antigen-specific peptide.

Background

Essential component of a neuregulin-receptor complex, although neuregulins do not interact with it alone. GP30 is a potential ligand for this receptor.

Not activated by EGF, TGF-alpha and amphiregulin.

Chuang TD, et al. (2010) J Biol Chem 285, 23598-606

Bhuvaneshwari R, Gan YY, Soo KC, Olivo M (2009) Mol Cancer 8, 94

Thelemann A, et al. (2005) Mol Cell Proteomics 4, 356-76

Note: This product is for in vitro research use only