

Smad2 (Phospho-Ser250) Antibody

Catalog No: #11924

Package Size: #11924-1 50ul #11924-2 100ul

Orders: order@signalwayantibody.com

Support: tech@signalwayantibody.com

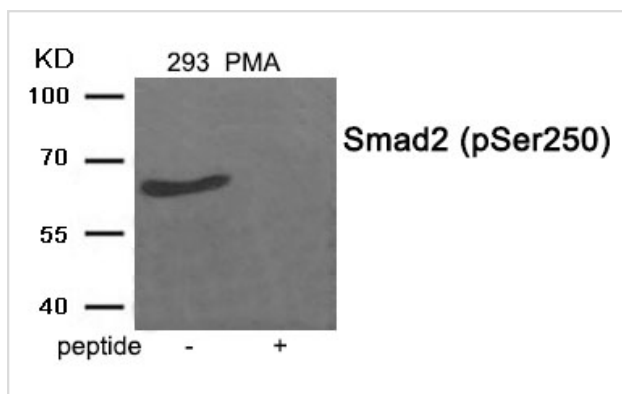
Description

Product Name	Smad2 (Phospho-Ser250) Antibody
Host Species	Rabbit
Clonality	Polyclonal
Purification	Antibodies were produced by immunizing rabbits with synthetic phosphopeptide and KLH conjugates. Antibodies were purified by affinity-chromatography using epitope-specific phosphopeptide. Non-phospho specific antibodies were removed by chromatography using non-phosphopeptide.
Applications	WB
Species Reactivity	Hu Ms Rt
Specificity	The antibody detects endogenous level of Smad2 only when phosphorylated at serine 250.
Immunogen Type	Peptide-KLH
Immunogen Description	Peptide sequence around phosphorylation site of serine250(E-L-S(p)-P-T) derived from Human Smad2 .
Target Name	Smad2
Modification	Phospho
Other Names	JV18-1; MADH2; Mad-related protein 2; Mothers against DPP homolog 2;
Accession No.	Swiss-Prot#: Q15796; NCBI Gene#: 4087; NCBI Protein#: NP_001003652.1
Uniprot	Q15796
GeneID	4087;
SDS-PAGE MW	65kd
Concentration	1.0mg/ml
Formulation	Rabbit IgG in phosphate buffered saline (without Mg ²⁺ and Ca ²⁺), pH 7.4, 150mM NaCl, 0.02% sodium azide and 50% glycerol.
Storage	Store at -20°C/1 year

Application Details

Western blotting: 1:500~1:1000

Images



Western blot analysis of extracts from 293 cells treated with PMA using Phospho-Smad2 (Ser250) antibody #11924. The lane on the right is treated with the antigen-specific peptide.

Background

Transcriptional modulator activated by TGF-beta and activin type 1 receptor kinase. SMAD2 is a receptor-regulated SMAD (R-SMAD). May act as a tumor suppressor in colorectal carcinoma.

Fransvea E, Mazzocca A, Antonaci S, Giannelli G (2009)Hepatology 49, 839-50 .
(2002)J Biol Chem 277, 41361-8.

Funaba M, Zimmerman CM, Mathews LS

Kretzschmar M, Doody J, Timokhina I, Massagué B; J (1999)Genes Dev 13, 804-16 .

Note: This product is for in vitro research use only