

Cyclin D1 (Phospho-Thr286) Antibody

Catalog No: #11968

Package Size: #11968-1 50ul #11968-2 100ul

Orders: order@signalwayantibody.comSupport: tech@signalwayantibody.com

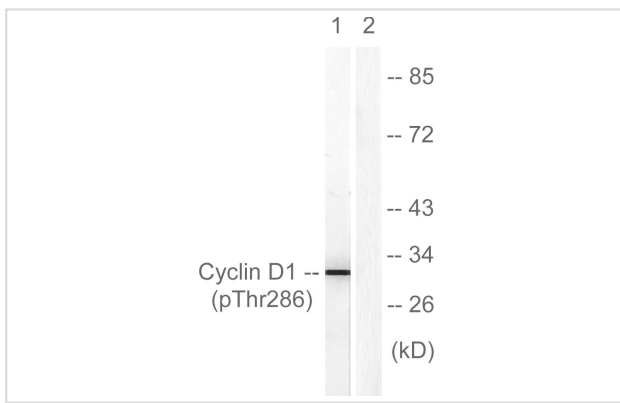
Description

Product Name	Cyclin D1 (Phospho-Thr286) Antibody
Host Species	Rabbit
Clonality	Polyclonal
Purification	Antibodies were produced by immunizing rabbits with synthetic phosphopeptide and KLH conjugates. Antibodies were purified by affinity-chromatography using epitope-specific phosphopeptide. Non-phospho specific antibodies were removed by chromatography using non-phosphopeptide.
Applications	WB
Species Reactivity	Hu
Specificity	The antibody detects endogenous level of Cyclin D1 only when phosphorylated at threonine 286.
Immunogen Type	Peptide-KLH
Immunogen Description	Peptide sequence around phosphorylation site of threonine 286 (A-C-T(p)-P-T) derived from Human Cyclin D1.
Target Name	Cyclin D1
Modification	Phospho
Other Names	BCL-1 ; oncogene; CYL-1; PRAD1; PRAD1
Accession No.	Swiss-Prot#: P24385; NCBI Gene#: 595; NCBI Protein#: NP_444284.1
Uniprot	P24385
GeneID	595;
SDS-PAGE MW	33kd
Concentration	1.0mg/ml
Formulation	Rabbit IgG in phosphate buffered saline (without Mg ²⁺ and Ca ²⁺), pH 7.4, 150mM NaCl, 0.02% sodium azide and 50% glycerol.
Storage	Store at -20°C/1 year

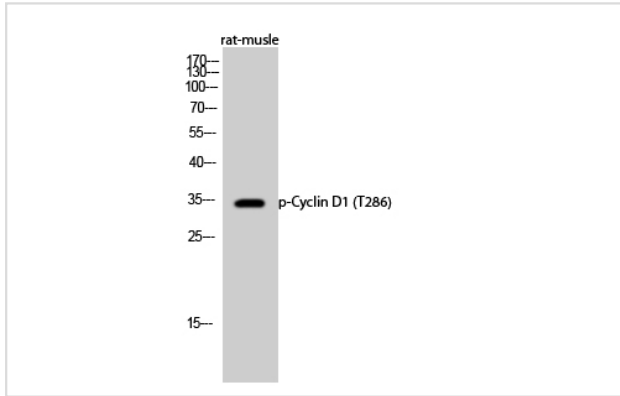
Application Details

Western blotting: 1:500~1:1000

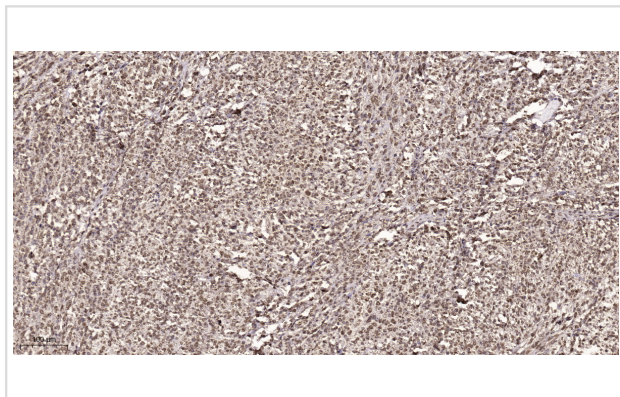
Images



Western blot analysis of lysates from Jurkat cells treated with EGF 200ng/ml 30', using Cyclin D1 (Phospho-Thr286) Antibody. The lane on the right is blocked with the phospho peptide.



Western Blot analysis of rat-muscle cells using Phospho-Cyclin D1 (T286) Polyclonal Antibody diluted at 1:500



Immunohistochemical analysis of paraffin-embedded human small intestinal carcinoma tissue. 1,primary Antibody was diluted at 1:200(4° overnight). 2, Sodium citrate pH 6.0 was used for antigen retrieval(>98°C,20min). 3,Secondary antibody was diluted at 1:233

Background

Accepts ubiquitin from the E1 complex and catalyzes its covalent attachment to other proteins. In vitro catalyzes 'Lys-48'-linked polyubiquitination. Mediates the selective degradation of short-lived and abnormal proteins. Functions in the E6/E6-AP-induced ubiquitination of p53/TP53. Mediates ubiquitination of PEX5 and auto-ubiquitination of STUB1, TRAF6 and TRIM63/MURF1. Ubiquitinates STUB1-associated HSP90AB1 in vitro. Lacks inherent specificity for any particular lysine residue of ubiquitin. Essential for viral activation of IRF3. Mediates polyubiquitination of CYP3A4.

Liou YC, et al. (2002) Proc Natl Acad Sci U S A 99, 1335-40

Tagliati F, et al. (2006) Endocrinology 147, 3530-8

Zou Y, et al. (2004) J Biol Chem 279, 27790-8

Note: This product is for in vitro research use only