

## Cyclin D1 (Phospho-Ser90) Antibody

Catalog No: #11986

Package Size: #11986-1 50ul #11986-2 100ul

Orders: [order@signalwayantibody.com](mailto:order@signalwayantibody.com)Support: [tech@signalwayantibody.com](mailto:tech@signalwayantibody.com)

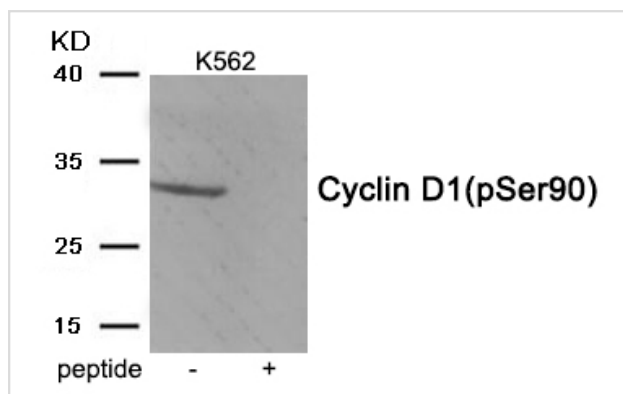
## Description

Product Name	Cyclin D1 (Phospho-Ser90) Antibody
Host Species	Rabbit
Clonality	Polyclonal
Purification	Antibodies were produced by immunizing rabbits with synthetic phosphopeptide and KLH conjugates. Antibodies were purified by affinity-chromatography using epitope-specific phosphopeptide. Non-phospho specific antibodies were removed by chromatography using non-phosphopeptide.
Applications	WB
Species Reactivity	Hu
Specificity	The antibody detects endogenous level of Cyclin D1 only when phosphorylated at serine 90.
Immunogen Type	Peptide-KLH
Immunogen Description	Peptide sequence around phosphorylation site of serine 90(F-L-S(p)-L-E) derived from Human Cyclin D1 .
Target Name	Cyclin D1
Modification	Phospho
Other Names	BCL1; CCND1; CYL-1; PRAD1; PRAD1 oncogene
Accession No.	Swiss-Prot#: P24385; NCBI Gene#: 595; NCBI Protein#: NP_444284.1
Uniprot	P24385
GeneID	595;
SDS-PAGE MW	31kd
Concentration	1.0mg/ml
Formulation	Rabbit IgG in phosphate buffered saline (without Mg2+ and Ca2+), pH 7.4, 150mM NaCl, 0.02% sodium azide and 50% glycerol.
Storage	Store at -20°C/1 year

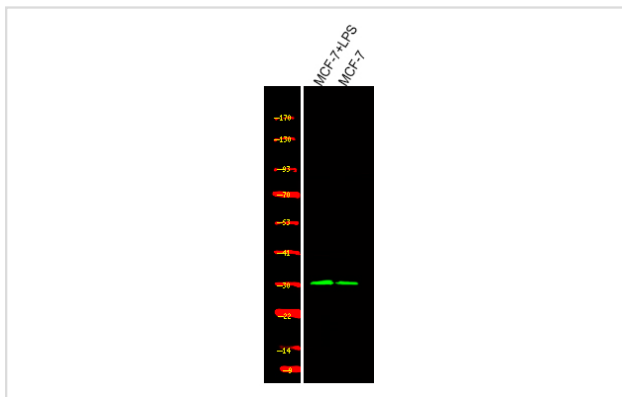
## Application Details

Western blotting: 1:500~1:1000

## Images



Western blot analysis of extracts from K562 tissue using Cyclin D1 (Phospho-Ser90) antibody #11986. The lane on the right is treated with the antigen-specific peptide.



Western Blot analysis of lysates of MCF7 treated with LPS and MCF7, using primary antibody at 1:1000 dilution.

## Background

Accepts ubiquitin from the E1 complex and catalyzes its covalent attachment to other proteins. In vitro catalyzes 'Lys-48'-linked polyubiquitination. Mediates the selective degradation of short-lived and abnormal proteins. Functions in the E6/E6-AP-induced ubiquitination of p53/TP53. Mediates ubiquitination of PEX5 and auto-ubiquitination of STUB1, TRAF6 and TRIM63/MURF1. Ubiquitinates STUB1-associated HSP90AB1 in vitro. Lacks inherent specificity for any particular lysine residue of ubiquitin. Essential for viral activation of IRF3. Mediates polyubiquitination of CYP3A4. Sewing A, M&sup1;ller R (1994) Oncogene 9, 2733-6

Note: This product is for in vitro research use only