

## CD45 (Phospho-Ser1007) Antibody

Catalog No: #11993

Package Size: #11993-1 50ul #11993-2 100ul

Orders: [order@signalwayantibody.com](mailto:order@signalwayantibody.com)Support: [tech@signalwayantibody.com](mailto:tech@signalwayantibody.com)

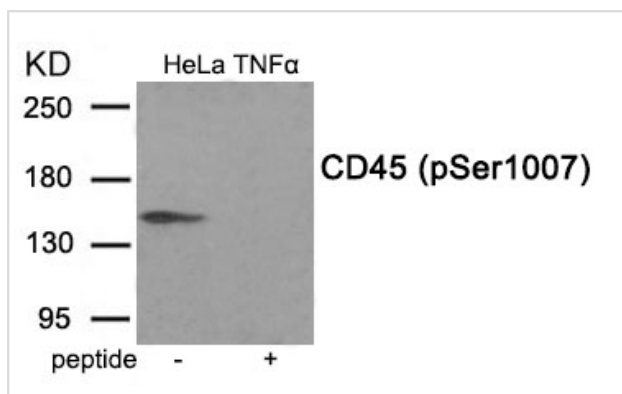
## Description

Product Name	CD45 (Phospho-Ser1007) Antibody
Host Species	Rabbit
Clonality	Polyclonal
Purification	Antibodies were produced by immunizing rabbits with synthetic phosphopeptide and KLH conjugates. Antibodies were purified by affinity-chromatography using epitope-specific phosphopeptide. Non-phospho specific antibodies were removed by chromatography using non-phosphopeptide.
Applications	WB
Species Reactivity	Hu
Specificity	The antibody detects endogenous level of CD45 only when phosphorylated at serine 1007.
Immunogen Type	Peptide-KLH
Immunogen Description	Peptide sequence around phosphorylation site of serine 1007 (D-D-S(p)-D-S) derived from Human CD45.
Target Name	CD45
Modification	Phospho
Other Names	L-CA; LY-5; Leukocyte common antigen precursor; PTPRC; T200
Accession No.	Swiss-Prot#: P08575; NCBI Gene#: 5788; NCBI Protein#: NP_001254727.1
Uniprot	P08575
GeneID	5788;
SDS-PAGE MW	150kd
Concentration	1.0mg/ml
Formulation	Rabbit IgG in phosphate buffered saline (without Mg <sup>2+</sup> and Ca <sup>2+</sup> ), pH 7.4, 150mM NaCl, 0.02% sodium azide and 50% glycerol.
Storage	Store at -20°C/1 year

## Application Details

Western blotting: 1:500~1:1000

## Images



Western blot analysis of extracts from HeLa cells treated with TNF using Phospho-CD45 (Ser1007) antibody #11993. The lane on the right is treated with the antigen-specific peptide.

## Background

---

Protein binding; transmembrane receptor protein tyrosine phosphatase activity; protein tyrosine phosphatase activity; protein kinase binding.  
Wang Y, Guo W, Liang L, Esselman WJ (1999)J Biol Chem 274, 7454-61.

---

Note: This product is for in vitro research use only