

SF1 (Phospho-Ser82) Antibody

Catalog No: #11669



Package Size: #11669-1 50ul #11669-2 100ul

Orders: order@signalwayantibody.comSupport: tech@signalwayantibody.com

Description

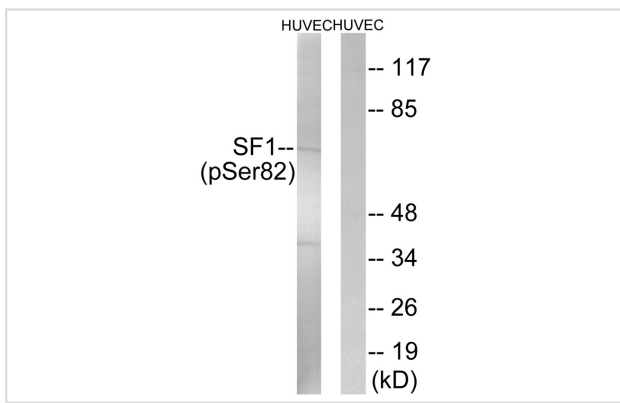
Product Name	SF1 (Phospho-Ser82) Antibody
Host Species	Rabbit
Clonality	Polyclonal
Purification	Antibodies were produced by immunizing rabbits with synthetic phosphopeptide and KLH conjugates. Antibodies were purified by affinity-chromatography using epitope-specific phosphopeptide. Non-phospho specific antibodies were removed by chromatography using non-phosphopeptide.
Applications	WB IHC
Species Reactivity	Hu Ms
Specificity	The antibody detects endogenous levels of SF1 only when phosphorylated at serine 82.
Immunogen Type	Peptide-KLH
Immunogen Description	Peptide sequence around phosphorylation site of Serine 82(S-P-S(p)-P-E) derived from Human SF1.
Target Name	SF1
Modification	Phospho
Other Names	BBP; CW17; SF01; ZFM1; ZNF162
Accession No.	Swiss-Prot#: Q15637; NCBI Gene#: 7536; NCBI Protein#: NP_004621.2.
Uniprot	Q15637
GeneID	7536;
SDS-PAGE MW	68kd
Concentration	1.0mg/ml
Formulation	Rabbit IgG in phosphate buffered saline (without Mg ²⁺ and Ca ²⁺), pH 7.4, 150mM NaCl, 0.02% sodium azide and 50% glycerol.
Storage	Store at -20°C/1 year

Application Details

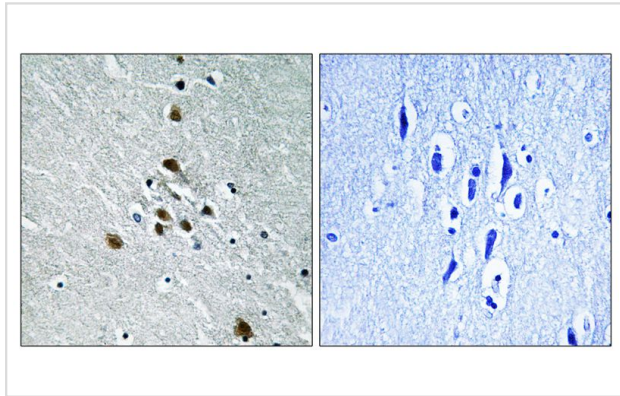
Western blotting: 1:500~1:1000

Immunohistochemistry: 1:50~1:100

Images



Western blot analysis of extracts from HUVEC cells treated with anisomycin using SF1 (Phospho-Ser82) Antibody #11669. The lane on the right is treated with the antigen-specific peptide.



Immunohistochemical analysis of paraffin-embedded human brain tissue using SF1 (Phospho-Ser82) antibody #11669 (left) or the same antibody preincubated with blocking peptide (right).

Background

Necessary for the ATP-dependent first step of spliceosome assembly. Binds to the intron branch point sequence (BPS) 5'-UACUAAC-3' of the pre-mRNA. May act as transcription repressor.

Susan Y. Park, *Development*, May 2005; 132: 2415 - 2423.

Dujin Zhou, *Mol. Endocrinol.*, Jul 2000; 14: 986.

Dagmar Wilhelm, *Genes & Dev.*, Jul 2002; 16: 1839.

Philipp Gut, *Development*, Oct 2005; 132: 4611 - 4619.

Note: This product is for in vitro research use only