

PKA-R2 $\beta$  (Phospho-Ser114) Antibody

Catalog No: #11692

Package Size: #11692-1 50ul #11692-2 100ul

Orders: order@signalwayantibody.com

Support: tech@signalwayantibody.com

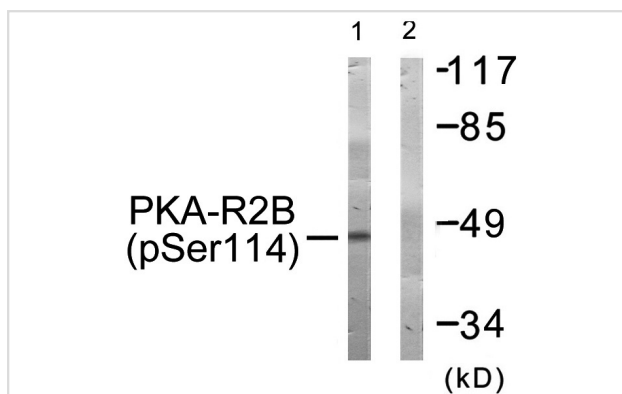
## Description

Product Name	PKA-R2 $\beta$ (Phospho-Ser114) Antibody
Host Species	Rabbit
Clonality	Polyclonal
Purification	Antibodies were produced by immunizing rabbits with synthetic phosphopeptide and KLH conjugates. Antibodies were purified by affinity-chromatography using epitope-specific phosphopeptide. Non-phospho specific antibodies were removed by chromatography using non-phosphopeptide.
Applications	WB
Species Reactivity	Hu Ms Rt
Specificity	The antibody detects endogenous levels of PKA-R2 $\beta$ only when phosphorylated at serine 114.
Immunogen Type	Peptide-KLH
Immunogen Description	Peptide sequence around phosphorylation site of Serine114(R-A-S(p)-V-C) derived from Human PKA-R2 $\beta$ .
Target Name	PKA-R2 $\beta$
Modification	Phospho
Other Names	KAP3; PRKAR2B; PKA R2-beta;
Accession No.	Swiss-Prot#: P31323; NCBI Gene#: 5577; NCBI Protein#: NP_002727.2.
Uniprot	P31323
GeneID	5577;
SDS-PAGE MW	46kd
Concentration	1.0mg/ml
Formulation	Rabbit IgG in phosphate buffered saline (without Mg <sup>2+</sup> and Ca <sup>2+</sup> ), pH 7.4, 150mM NaCl, 0.02% sodium azide and 50% glycerol.
Storage	Store at -20°C/1 year

## Application Details

Western blotting: 1:500~1:1000

## Images



Western blot analysis of extracts from COS-7 cells treated with PMA using PKA-R2 $\beta$  (Phospho-Ser114) Antibody #11692. The lane on the right is treated with the antigen-specific peptide.

## Background

---

Regulatory subunit of the cAMP-dependent protein kinases involved in cAMP signaling in cells. Type II regulatory chains mediate membrane association by binding to anchoring proteins, including the MAP2 kinase.

Levy F.O., Mol. Endocrinol. 2:1364-1373(1988).

DeGiorgis J.A., J. Proteome Res. 4:306-315(2005).

Han G., Proteomics 8:1346-1361(2008)

---

Note: This product is for in vitro research use only