

IL-2R $\beta$ /CD122 (Phospho-Tyr364) Antibody

Catalog No: #11697

Package Size: #11697-1 50ul #11697-2 100ul

Orders: [order@signalwayantibody.com](mailto:order@signalwayantibody.com)Support: [tech@signalwayantibody.com](mailto:tech@signalwayantibody.com)

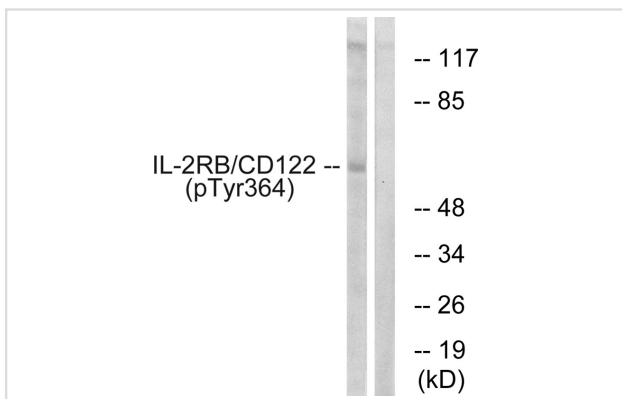
## Description

Product Name	IL-2R $\beta$ /CD122 (Phospho-Tyr364) Antibody
Host Species	Rabbit
Clonality	Polyclonal
Purification	Antibodies were produced by immunizing rabbits with synthetic phosphopeptide and KLH conjugates. Antibodies were purified by affinity-chromatography using epitope-specific phosphopeptide. Non-phospho specific antibodies were removed by chromatography using non-phosphopeptide.
Applications	WB
Species Reactivity	Hu Ms
Specificity	The antibody detects endogenous levels of IL-2R $\beta$ /CD122 only when phosphorylated at tyrosine 364.
Immunogen Type	Peptide-KLH
Immunogen Description	Peptide sequence around phosphorylation site of tyrosine 364(Q-G-Y(p)-F-F) derived from Human IL-2R $\beta$ /CD122 .
Target Name	IL-2R $\beta$ /CD122
Modification	Phospho
Other Names	CD122 antigen; P70-75; IL-2 receptor; IL-2R beta;
Accession No.	Swiss-Prot#: P14784; NCBI Gene#: 3560; NCBI Protein#: NP_000869.1.
Uniprot	P14784
GeneID	3560;
SDS-PAGE MW	75kd
Concentration	1.0mg/ml
Formulation	Rabbit IgG in phosphate buffered saline (without Mg <sup>2+</sup> and Ca <sup>2+</sup> ), pH 7.4, 150mM NaCl, 0.02% sodium azide and 50% glycerol.
Storage	Store at -20°C/1 year

## Application Details

Western blotting: 1:500~1:1000

## Images



Western blot analysis of extracts from COS7 cells using IL-2R $\beta$ /CD122 (Phospho-Tyr364) Antibody #11697. The lane on the right is treated with the antigen-specific peptide.

## Background

Receptor for interleukin-2. This beta subunit is involved in receptor mediated endocytosis and transduces the mitogenic signals of IL2.

Hatakeyama M., Science 244:551-556(1989).

Dunham I., Nature 402:489-495(1999).

Mulloy J.C., J. Virol. 70:3599-3605(1996)

Note: This product is for in vitro research use only