

Ezrin(Ab-567) Antibody

Catalog No: #21200

Package Size: #21200-1 50ul #21200-2 100ul

Orders: order@signalwayantibody.com

Support: tech@signalwayantibody.com

Description

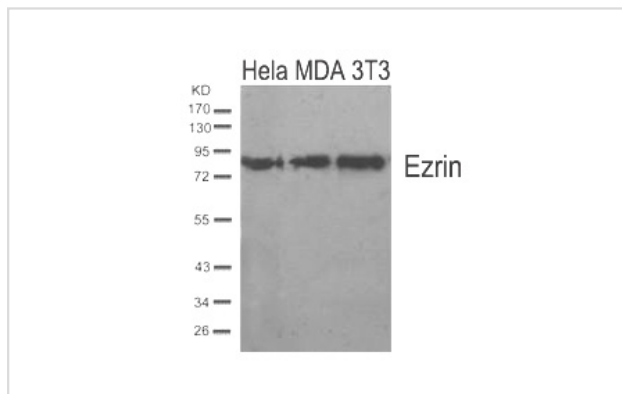
Product Name	Ezrin(Ab-567) Antibody
Host Species	Rabbit
Clonality	Polyclonal
Purification	Antibodies were produced by immunizing rabbits with synthetic peptide and KLH conjugates. Antibodies were purified by affinity-chromatography using epitope-specific peptide.
Applications	WB
Species Reactivity	Hu Ms Rt
Specificity	The antibody detects endogenous level of total Ezrin protein.
Immunogen Type	Peptide-KLH
Immunogen Description	Peptide sequence around aa. 565~569 (Y-K-T-L-R) derived from Human Ezrin.
Target Name	Ezrin
Other Names	Cytovillin; EZRI; VIL2; Villin 2; p81
Accession No.	Swiss-Prot: P15311NCBI Protein: NP_001104547.1
Uniprot	P15311
GeneID	7430;
Concentration	1.0mg/ml
Formulation	Supplied at 1.0mg/mL in phosphate buffered saline (without Mg ²⁺ and Ca ²⁺), pH 7.4, 150mM NaCl, 0.02% sodium azide and 50% glycerol.
Storage	Store at -20°C for long term preservation (recommended). Store at 4°C for short term use.

Application Details

Predicted MW: 81kd

Western blotting: 1:500~1:1000

Images



Western blot analysis of extracts from HeLa,MDA and 3T3 cells using Ezrin(Ab-567) Antibody #21200.

Background

Probably involved in connections of major cytoskeletal structures to the plasma membrane. In epithelial cells, required for the formation of microvilli and membrane ruffles on the apical pole. Along with PLEKHG6, required for normal macropinocytosis.

Zhou R, et al. (2005) J Cell Sci: 118 (Pt 19): 4381-91.

Shiue H, et al.(2005) J Biol Chem: 280(2): 1688-95.

Zhao H, et al. (2004) Proc Natl Acad Sci U S A: 101(25): 9485-90.

Fievet BT, et al. (2004) J Cell Biol: 164(5): 653-9.

Note: This product is for in vitro research use only