

MEK1/MEK2(Ab-217/221) Antibody

Catalog No: #21203



Package Size: #21203-1 50ul #21203-2 100ul

Orders: order@signalwayantibody.comSupport: tech@signalwayantibody.com

Description

Product Name	MEK1/MEK2(Ab-217/221) Antibody
Host Species	Rabbit
Clonality	Polyclonal
Purification	Antibodies were produced by immunizing rabbits with synthetic peptide and KLH conjugates. Antibodies were purified by affinity-chromatography using epitope-specific peptide.
Applications	WB IHC IF
Species Reactivity	Hu Ms Rt
Specificity	The antibody detects endogenous level of total MEK1/MEK2 protein.
Immunogen Type	Peptide-KLH
Immunogen Description	Peptide sequence around aa.215~219/219~223 (I-D-S-M-A) derived from Human MEK1/MEK2.
Target Name	MEK1/MEK2
Other Names	ERK activator kinase 1/ERK activator kinase2; MAP kinase kinase 1/MAP kinase kinase 2; MAP2K1/MAP2K1; MAPK/ERK kinase 1/MAPK/ERK kinase 2; MAPKK 1/MAPKK 1
Accession No.	Swiss-Prot: Q02750NCBI Protein: NP_002746.1 NP_109587.1
Uniprot	Q02750
GeneID	5604;
Concentration	1.0mg/ml
Formulation	Supplied at 1.0mg/mL in phosphate buffered saline (without Mg ²⁺ and Ca ²⁺), pH 7.4, 150mM NaCl, 0.02% sodium azide and 50% glycerol.
Storage	Store at -20°C for long term preservation (recommended). Store at 4°C for short term use.

Application Details

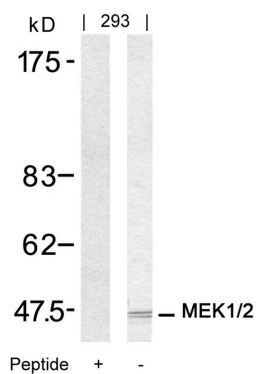
Predicted MW: 45kd

Western blotting: 1:500~1:1000

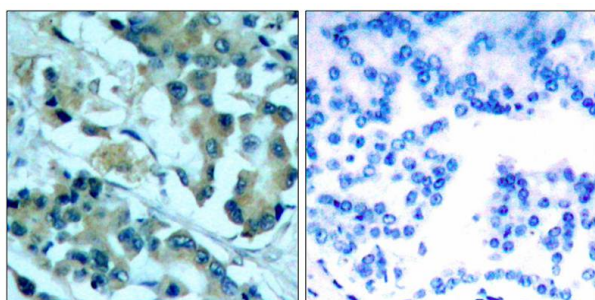
Immunohistochemistry: 1:50~1:100

Immunofluorescence: 1:100~1:200

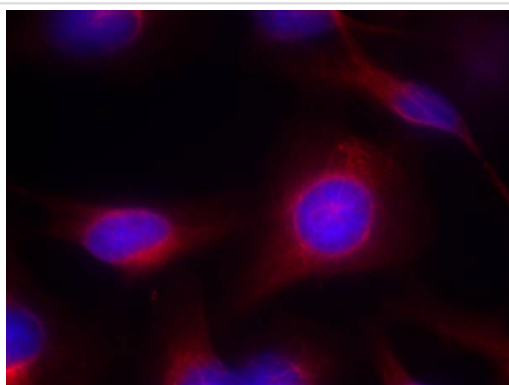
Images



Western blot analysis of extracts from 293 cells using MEK1/MEK2(Ab-217/221) Antibody #21203 and the same antibody preincubated with blocking peptide.



Immunohistochemical analysis of paraffin-embedded human lung carcinoma tissue using MEK1/MEK2(Ab-217/221) Antibody #21203(left) or the same antibody preincubated with blocking peptide(right).



Immunofluorescence staining of methanol-fixed HeLa cells using MEK1/MEK2(Ab-217/221) Antibody #21203.

Background

Catalyzes the concomitant phosphorylation of a threonine and a tyrosine residue in a Thr-Glu-Tyr sequence located in MAP kinases. Activates ERK1 and ERK2 MAP kinases.

Shen R, et al. (2002) Mol Cell Biol; 22(10): 3230-3236

Preisinger C, et al. (2005) EMBO J; 24(4): 753-765

Laine P, et al. (2000) Biochem J; 349(Pt 1): 19-25

Yaglom J, et al. (2003) Mol Cell Biol; 23(11): 3813-3824

Dahan S, et al. (2002) Infect Immun; 70(5): 2304-2310

Note: This product is for in vitro research use only