

STK39 (Phospho-Ser323) Antibody

Catalog No: #11754

Package Size: #11754-1 50ul #11754-2 100ul

Orders: order@signalwayantibody.comSupport: tech@signalwayantibody.com

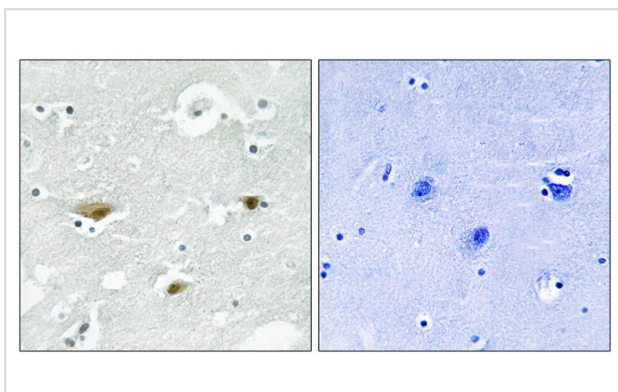
Description

Product Name	STK39 (Phospho-Ser323) Antibody
Host Species	Rabbit
Clonality	Polyclonal
Purification	Antibodies were produced by immunizing rabbits with synthetic phosphopeptide and KLH conjugates. Antibodies were purified by affinity-chromatography using epitope-specific phosphopeptide. Non-phospho specific antibodies were removed by chromatography using non-phosphopeptide.
Applications	IHC
Species Reactivity	Hu
Specificity	The antibody detects endogenous levels of STK39 only when phosphorylated at serine 323.
Immunogen Type	Peptide-KLH
Immunogen Description	Peptide sequence around phosphorylation site of Serine 323(D-P-S(p)-K-R) derived from Human STK39.
Target Name	STK39
Modification	Phospho
Other Names	DCHT; STK39; SPAK;
Accession No.	Swiss-Prot#: Q9UEW8; NCBI Gene#: 27347; NCBI Protein#: NP_037365.2.
Uniprot	Q9UEW8
GeneID	27347;
SDS-PAGE MW	59kd
Concentration	1.0mg/ml
Formulation	Rabbit IgG in phosphate buffered saline (without Mg ²⁺ and Ca ²⁺), pH 7.4, 150mM NaCl, 0.02% sodium azide and 50% glycerol.
Storage	Store at -20°C/1 year

Application Details

Immunohistochemistry: 1:50~1:100

Images



Immunohistochemical analysis of paraffin-embedded human brain tissue using STK39 (Phospho-Ser323) antibody #11754 (left) or the same antibody preincubated with blocking peptide (right).

Background

May act as a mediator of stress-activated signals.

Johnston A.M., *Oncogene* 19:4290-4297(2000).

Olsen J.V., *Cell* 127:635-648(2006).

Beausoleil S.A., *Nat. Biotechnol.* 24:1285-1292(2006).

Note: This product is for in vitro research use only