

HP1 α (Phospho-Ser92) Antibody

Catalog No: #11777

Package Size: #11777-1 50ul #11777-2 100ul

Orders: order@signalwayantibody.com

Support: tech@signalwayantibody.com

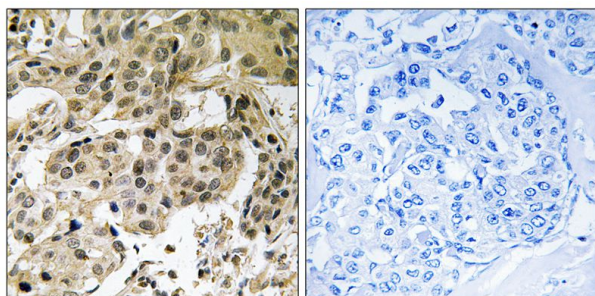
Description

Product Name	HP1 α (Phospho-Ser92) Antibody
Host Species	Rabbit
Clonality	Polyclonal
Purification	Antibodies were produced by immunizing rabbits with synthetic phosphopeptide and KLH conjugates. Antibodies were purified by affinity-chromatography using epitope-specific phosphopeptide. Non-phospho specific antibodies were removed by chromatography using non-phosphopeptide.
Applications	IHC
Species Reactivity	Hu
Specificity	The antibody detects endogenous levels of HP1 α only when phosphorylated at serine 92.
Immunogen Type	Peptide-KLH
Immunogen Description	Peptide sequence around phosphorylation site of Serine 92(R-S-S(p)-N-F) derived from Human HP1 α .
Target Name	HP1 α
Modification	Phospho
Other Names	HP1A; HP1 alpha; antigen p25;
Accession No.	Swiss-Prot#: P45973; NCBI Gene#: 23468; NCBI Protein#: NP_001120793.1.
Uniprot	P45973
GeneID	23468;
SDS-PAGE MW	22kd
Concentration	1.0mg/ml
Formulation	Rabbit IgG in phosphate buffered saline (without Mg ²⁺ and Ca ²⁺), pH 7.4, 150mM NaCl, 0.02% sodium azide and 50% glycerol.
Storage	Store at -20°C/1 year

Application Details

Immunohistochemistry: 1:50~1:100

Images



Immunohistochemical analysis of paraffin-embedded human breast carcinoma tissue using HP1 α (Phospho-Ser92) antibody #11777 (left) or the same antibody preincubated with blocking peptide (right).

Background

Heterochromatin protein-1 (HP1) is a methyl-lysine binding protein localized at heterochromatin sites, where it mediates gene silencing.

Saunders W.S., J. Cell Sci. 104:573-582(1993).

Ye Q., J. Biol. Chem. 271:14653-14656(1996).

Ye Q., J. Biol. Chem. 272:14983-14989(1997).

Note: This product is for in vitro research use only