

APLP2 (Phospho-Tyr755) Antibody

Catalog No: #11784

Package Size: #11784-1 50ul #11784-2 100ul

Orders: order@signalwayantibody.comSupport: tech@signalwayantibody.com

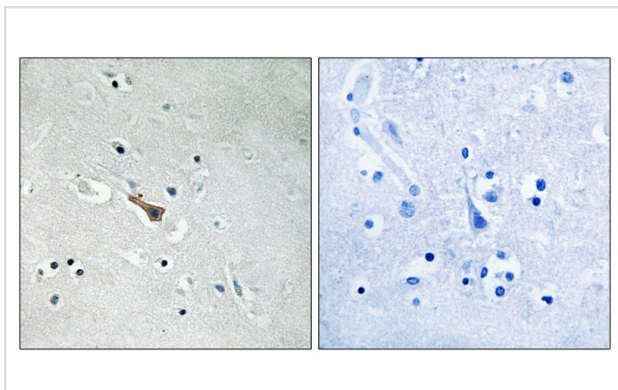
Description

Product Name	APLP2 (Phospho-Tyr755) Antibody
Host Species	Rabbit
Clonality	Polyclonal
Purification	Antibodies were produced by immunizing rabbits with synthetic phosphopeptide and KLH conjugates. Antibodies were purified by affinity-chromatography using epitope-specific phosphopeptide. Non-phospho specific antibodies were removed by chromatography using non-phosphopeptide.
Applications	IHC
Species Reactivity	Hu
Specificity	The antibody detects endogenous levels of APLP2 only when phosphorylated at tyrosine 755
Immunogen Type	Peptide-KLH
Immunogen Description	Peptide sequence around phosphorylation site of tyrosine 755 (P-T-Y(p)-K-Y) derived from Human APLP2.
Target Name	APLP2
Modification	Phospho
Other Names	Amyloid protein homolog ; Amyloid-like protein 2 precursor; APP2; APPH; CDEI-box binding protein
Accession No.	Swiss-Prot#: Q06481; NCBI Gene#: 334; NCBI Protein#: NP_001633.1.
Uniprot	Q06481
GeneID	334;
SDS-PAGE MW	86kd
Concentration	1.0mg/ml
Formulation	Rabbit IgG in phosphate buffered saline (without Mg ²⁺ and Ca ²⁺), pH 7.4, 150mM NaCl, 0.02% sodium azide and 50% glycerol.
Storage	Store at -20°C/1 year

Application Details

Immunohistochemistry: 1:50~1:100

Images



Immunohistochemical analysis of paraffin-embedded human brain tissue using APLP2 (Phospho-Tyr755) antibody #11784 (left) or the same antibody preincubated with blocking peptide (right).

Background

APLP2 May play a role in the regulation of hemostasis. The soluble form may have inhibitory properties towards coagulation factors. May interact with cellular G-protein signaling pathways. May bind to the DNA 5'-GTCACATG-3'(CDEI box).

Sprecher C.A., Biochemistry 32:4481-4486(1993).

Wasco W., Nat. Genet. 5:95-99(1993).

von der Kammer H., DNA Cell Biol. 13:1137-1143(1994).

Note: This product is for in vitro research use only