

B-Raf (Phospho-Thr753) Antibody

Catalog No: #11786

Package Size: #11786-1 50ul #11786-2 100ul

Orders: order@signalwayantibody.com

Support: tech@signalwayantibody.com

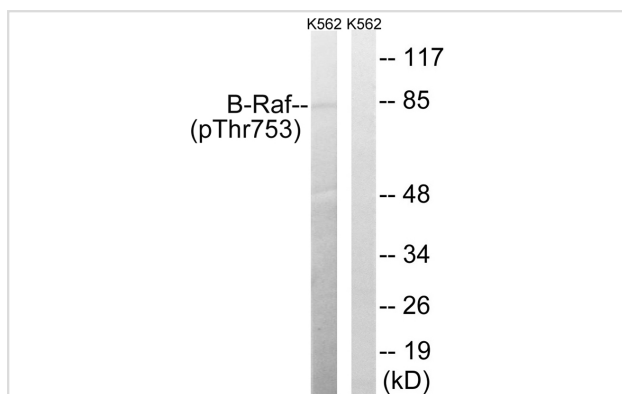
Description

Product Name	B-Raf (Phospho-Thr753) Antibody
Host Species	Rabbit
Clonality	Polyclonal
Purification	Antibodies were produced by immunizing rabbits with synthetic phosphopeptide and KLH conjugates. Antibodies were purified by affinity-chromatography using epitope-specific phosphopeptide. Non-phospho specific antibodies were removed by chromatography using non-phosphopeptide.
Applications	WB
Species Reactivity	Hu Ms Rt
Specificity	The antibody detects endogenous levels of B-Raf only when phosphorylated at threonine 753
Immunogen Type	Peptide-KLH
Immunogen Description	Peptide sequence around phosphorylation site of threonine 753 (P-K-T(p)-P-L) derived from Human B-Raf.
Target Name	B-Raf
Modification	Phospho
Other Names	B-RAF; RAFB1; RMIL; p94;
Accession No.	Swiss-Prot#: P15056; NCBI Gene#: 673; NCBI Protein#: NP_004324.2.
Uniprot	P15056
GeneID	673;
SDS-PAGE MW	84kd
Concentration	1.0mg/ml
Formulation	Rabbit IgG in phosphate buffered saline (without Mg ²⁺ and Ca ²⁺), pH 7.4, 150mM NaCl, 0.02% sodium azide and 50% glycerol.
Storage	Store at -20°C/1 year

Application Details

Western blotting: 1:500~1:1000

Images



Western blot analysis of extracts from K562 cells treated with EGF using B-Raf (Phospho-Thr753) Antibody #11786. The lane on the right is treated with the antigen-specific peptide.

Background

Involved in the transduction of mitogenic signals from the cell membrane to the nucleus. May play a role in the postsynaptic responses of hippocampal neuron.

Stephens R.M., Mol. Cell. Biol. 12:3733-3742(1992).

Albert S., Submitted (JAN-2004) to the EMBL/GenBank/DDBJ databases.

Scherer S.W., Science 300:767-772(2003)

Note: This product is for in vitro research use only