

## EPS15 (Phospho-Tyr849) Antibody

Catalog No: #11800

Package Size: #11800-1 50ul #11800-2 100ul

Orders: [order@signalwayantibody.com](mailto:order@signalwayantibody.com)Support: [tech@signalwayantibody.com](mailto:tech@signalwayantibody.com)

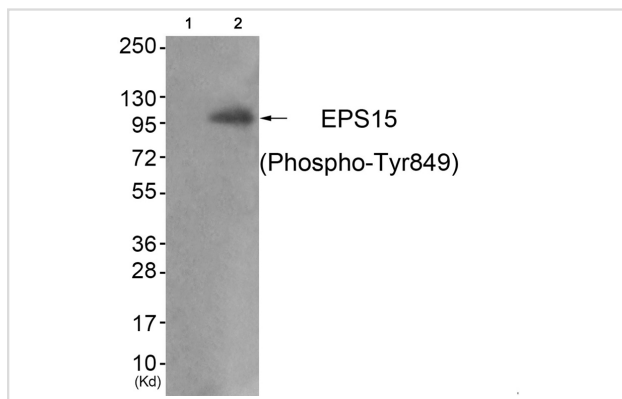
## Description

Product Name	EPS15 (Phospho-Tyr849) Antibody
Host Species	Rabbit
Clonality	Polyclonal
Purification	Antibodies were produced by immunizing rabbits with synthetic phosphopeptide and KLH conjugates. Antibodies were purified by affinity-chromatography using epitope-specific phosphopeptide. Non-phospho specific antibodies were removed by chromatography using non-phosphopeptide.
Applications	WB
Species Reactivity	Hu Ms Rt
Specificity	The antibody detects endogenous levels of EPS15 only when phosphorylated at tyrosine 849.
Immunogen Type	Peptide-KLH
Immunogen Description	Peptide sequence around phosphorylation site of tyrosine 849 (S-A-Y(p)-P-S) derived from Human Ephrin EPS15.
Target Name	EPS15
Modification	Phospho
Other Names	AF1P; MLLT5; EPS15; Protein Eps15;
Accession No.	Swiss-Prot#: P42566; NCBI Gene#: 2060; NCBI Protein#: NP_001972.1.
Uniprot	P42566
GeneID	2060;
SDS-PAGE MW	100kd
Concentration	1.0mg/ml
Formulation	Rabbit IgG in phosphate buffered saline (without Mg <sup>2+</sup> and Ca <sup>2+</sup> ), pH 7.4, 150mM NaCl, 0.02% sodium azide and 50% glycerol.
Storage	Store at -20°C/1 year

## Application Details

Western blotting: 1:500~1:1000

## Images



Western blot analysis of extracts from JK cells (Lane 2), using EPS15 (Phospho-Tyr849) Antibody #11800. The lane on the left is treated with antigen-specific peptide.

## Background

This gene encodes a protein that is part of the EGFR pathway. The protein is present at clatherin-coated pits and is involved in receptor-mediated endocytosis of EGF. Notably, this gene is rearranged with the HRX/ALL/MLL gene in acute myelogenous leukemias. Alternate transcriptional splice variants of this gene have been observed but have not been thoroughly characterized.

Wong W.T., *Oncogene* 9:1591-1597(1994).

Bernard O.A., *Oncogene* 9:1039-1045(1994).

Note: This product is for in vitro research use only