

Estrogen Receptor- $\alpha$  (Phospho-Ser102) Antibody

Catalog No: #11801

Package Size: #11801-1 50ul #11801-2 100ul

Orders: [order@signalwayantibody.com](mailto:order@signalwayantibody.com)Support: [tech@signalwayantibody.com](mailto:tech@signalwayantibody.com)

## Description

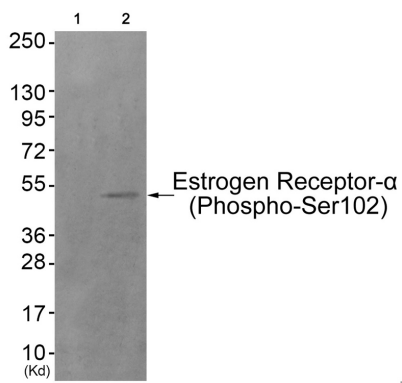
|                       |   |
|-----------------------|---|
| Product Name          | Estrogen Receptor- $\alpha$ (Phospho-Ser102) Antibody   |
| Host Species          | Rabbit  |
| Clonality             | Polyclonal  |
| Purification          | Antibodies were produced by immunizing rabbits with synthetic phosphopeptide and KLH conjugates.<br>Antibodies were purified by affinity-chromatography using epitope-specific phosphopeptide. Non-phospho specific antibodies were removed by chromatography using non-phosphopeptide. |
| Applications          | WB IHC  |
| Species Reactivity    | Hu Ms Rt  |
| Specificity           | The antibody detects endogenous levels of Estrogen Receptor- $\alpha$ only when phosphorylated at serine 102.   |
| Immunogen Type        | Peptide-KLH   |
| Immunogen Description | Peptide sequence around phosphorylation site of Serine102(L-N-S(p)-V-S) derived from Human Estrogen Receptor- $\alpha$ .  |
| Target Name           | Estrogen Receptor- $\alpha$   |
| Modification          | Phospho   |
| Other Names           | ER; ESR; ESR1; ESTR; NR3A1  |
| Accession No.         | Swiss-Prot#: P03372; NCBI Gene#: 2099; NCBI Protein#: NP_000116.2.  |
| Uniprot               | P03372  |
| GeneID                | 2099;   |
| SDS-PAGE MW           | 53kd  |
| Concentration         | 1.0mg/ml  |
| Formulation           | Rabbit IgG in phosphate buffered saline (without Mg <sup>2+</sup> and Ca <sup>2+</sup> ), pH 7.4, 150mM NaCl, 0.02% sodium azide and 50% glycerol.  |
| Storage               | Store at -20°C/1 year   |

## Application Details

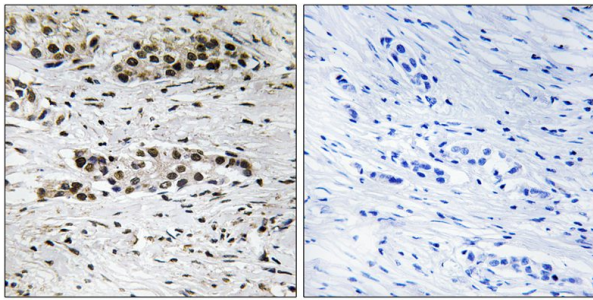
Western blotting: 1:500~1:1000

Immunohistochemistry: 1:50~1:100

## Images



Western blot analysis of extracts from HuvEc cells (Lane 2), using Estrogen Receptor- $\alpha$  (Phospho-Ser102) Antibody #11801. The lane on the left is treated with antigen-specific peptide.



Immunohistochemical analysis of paraffin-embedded human breast carcinoma tissue using Estrogen Receptor- $\alpha$  (Phospho-Ser102) antibody #11801 (left) or the same antibody preincubated with blocking peptide (right).

## Background

Nuclear hormone receptor. The steroid hormones and their receptors are involved in the regulation of eukaryotic gene expression and affect cellular proliferation and differentiation in target tissues.

Greene G.L., Science 231:1150-1154(1986).

Green S., Nature 320:134-139(1986).

Pink J.J., Nucleic Acids Res. 24:962-969(1996).

Note: This product is for in vitro research use only