

Gab2 (Phospho-Ser623) Antibody

Catalog No: #11803

Package Size: #11803-1 50ul #11803-2 100ul

Orders: order@signalwayantibody.comSupport: tech@signalwayantibody.com

Description

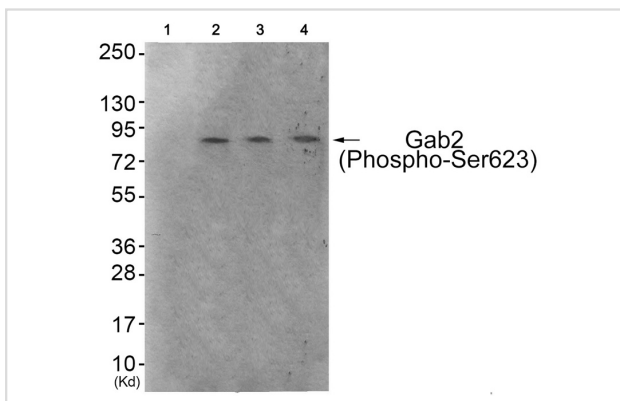
Product Name	Gab2 (Phospho-Ser623) Antibody
Host Species	Rabbit
Clonality	Polyclonal
Purification	Antibodies were produced by immunizing rabbits with synthetic phosphopeptide and KLH conjugates. Antibodies were purified by affinity-chromatography using epitope-specific phosphopeptide. Non-phospho specific antibodies were removed by chromatography using non-phosphopeptide.
Applications	WB IHC
Species Reactivity	Hu Ms
Specificity	The antibody detects endogenous levels of Gab2 only when phosphorylated at serine 623.
Immunogen Type	Peptide-KLH
Immunogen Description	Peptide sequence around phosphorylation site of Serine 623(P-S-S(p)-P-S) derived from Human Gab2 .
Target Name	Gab2
Modification	Phospho
Other Names	pp100; KIAA0571 ; GRB2-associated binder 2;
Accession No.	Swiss-Prot#: Q9UQC2; NCBI Gene#: 9846; NCBI Protein#: NP_536739.1.
Uniprot	Q9UQC2
GeneID	9846;
SDS-PAGE MW	80kd
Concentration	1.0mg/ml
Formulation	Rabbit IgG in phosphate buffered saline (without Mg ²⁺ and Ca ²⁺), pH 7.4, 150mM NaCl, 0.02% sodium azide and 50% glycerol.
Storage	Store at -20°C/1 year

Application Details

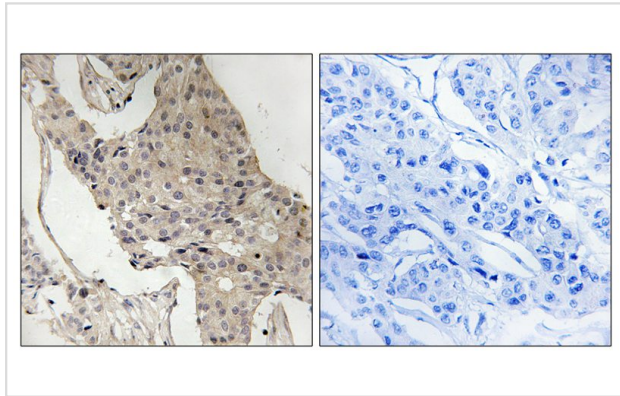
Western blotting: 1:500~1:1000

Immunohistochemistry: 1:50~1:100

Images



Western blot analysis of extracts from 293 cells (Lane 2), HeLa cells (Lane 3) and HepG2 cells (Lane 4), using Gab2 (Phospho-Ser623) Antibody #11803. The lane on the left is treated with antigen-specific peptide.



Immunohistochemical analysis of paraffin-embedded human breast carcinoma tissue using Gab2 (Phospho-Ser623) antibody #11803 (left) or the same antibody preincubated with blocking peptide (right).

Background

This gene is a member of the GRB2-associated binding protein (GAB) gene family and is similar to the GAB1 gene. These proteins contain pleckstrin homology (PH) domain, and bind SHP2 tyrosine phosphatase and GRB2 adapter protein. They act as adapters for transmitting various signals in response to stimuli through cytokine and growth factor receptors, and T- and B-cell antigen receptors. The protein encoded by this gene is the principal activator of phosphatidylinositol-3 kinase in response to activation of the high affinity IgE receptor. Two alternatively spliced transcripts encoding different isoforms have been described for this gene.

Nishida K., *Blood* 93:1809-1816(1999).

Nagase T., *DNA Res.* 5:31-39(1998).

Taylor T.D., *Nature* 440:497-500(2006).

Note: This product is for in vitro research use only