

## MDC1 (Phospho-Ser513) Antibody

Catalog No: #11807

Package Size: #11807-1 50ul #11807-2 100ul

Orders: order@signalwayantibody.com

Support: tech@signalwayantibody.com

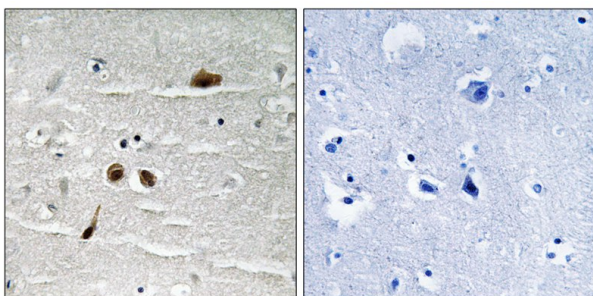
## Description

Product Name	MDC1 (Phospho-Ser513) Antibody
Host Species	Rabbit
Clonality	Polyclonal
Purification	Antibodies were produced by immunizing rabbits with synthetic phosphopeptide and KLH conjugates. Antibodies were purified by affinity-chromatography using epitope-specific phosphopeptide. Non-phospho specific antibodies were removed by chromatography using non-phosphopeptide.
Applications	IHC
Species Reactivity	Hu
Specificity	The antibody detects endogenous levels of MDC1 only when phosphorylated at serine 513.
Immunogen Type	Peptide-KLH
Immunogen Description	Peptide sequence around phosphorylation site of Serine 513(E-R-S(p)-Q-A) derived from Human MDC1.
Target Name	MDC1
Modification	Phospho
Other Names	IER3; NFBD1; KIAA0170; DKFZp781A0122;
Accession No.	Swiss-Prot#: Q14676; NCBI Gene#: 9656; NCBI Protein#: NP_055456.2.
Uniprot	Q14676
GeneID	9656;
SDS-PAGE MW	226kd
Concentration	1.0mg/ml
Formulation	Rabbit IgG in phosphate buffered saline (without Mg <sup>2+</sup> and Ca <sup>2+</sup> ), pH 7.4, 150mM NaCl, 0.02% sodium azide and 50% glycerol.
Storage	Store at -20°C/1 year

## Application Details

Immunohistochemistry: 1:50~1:100

## Images



Immunohistochemical analysis of paraffin-embedded human brain tissue using MDC1 (Phospho-Ser513) antibody #11807 (left) or the same antibody preincubated with blocking peptide (right).

## Background

---

The MDC1 protein contains a forkhead homology-associated (FHA) domain and 2 BRCA1 (MIM 113705) C-terminal motifs (BRCTs) and is required for the intra-S-phase DNA damage checkpoint.

Nagase T., DNA Res. 3:17-24(1996).

Shiina T., Genetics 173:1555-1570(2006).

Mungall A.J., Nature 425:805-811(2003).

---

Note: This product is for in vitro research use only