

## Neuro D (Phospho-Ser274) Antibody

Catalog No: #11809

Package Size: #11809-1 50ul #11809-2 100ul

Orders: order@signalwayantibody.com

Support: tech@signalwayantibody.com

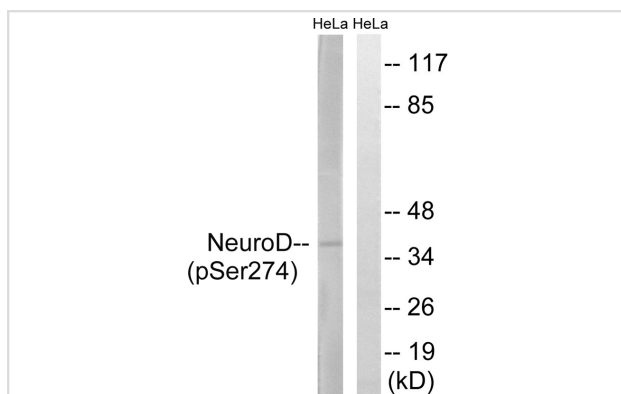
## Description

Product Name	Neuro D (Phospho-Ser274) Antibody
Host Species	Rabbit
Clonality	Polyclonal
Purification	Antibodies were produced by immunizing rabbits with synthetic phosphopeptide and KLH conjugates. Antibodies were purified by affinity-chromatography using epitope-specific phosphopeptide. Non-phospho specific antibodies were removed by chromatography using non-phosphopeptide.
Applications	WB
Species Reactivity	Hu Ms Rt
Specificity	The antibody detects endogenous levels of Neuro D only when phosphorylated at serine 274.
Immunogen Type	Peptide-KLH
Immunogen Description	Peptide sequence around phosphorylation site of Serine 274(P-L-S(p)-P-P) derived from Human Neuro D.
Target Name	Neuro D
Modification	Phospho
Other Names	NDF1; NEUROD; NeuroD1; beta2;
Accession No.	Swiss-Prot#: Q13562; NCBI Gene#: 4760; NCBI Protein#: NP_002491.2.
Uniprot	Q13562
GeneID	4760;
SDS-PAGE MW	36kd
Concentration	1.0mg/ml
Formulation	Rabbit IgG in phosphate buffered saline (without Mg <sup>2+</sup> and Ca <sup>2+</sup> ), pH 7.4, 150mM NaCl, 0.02% sodium azide and 50% glycerol.
Storage	Store at -20°C/1 year

## Application Details

Western blotting: 1:500~1:1000

## Images



Western blot analysis of extracts from HeLa cells treated with UV using Neuro D (Phospho-Ser274) Antibody #11809. The lane on the right is treated with the antigen-specific peptide.

## Background

---

NeuroD Acts as a differentiation factor during neurogenesis. Transcriptional activator. Binds to the insulin gene E-box.

Tamimi R., Genomics 34:418-421(1996).

Yokoyama M., Brain Res. Mol. Brain Res. 42:135-139(1996).

Miyachi T., Brain Res. Mol. Brain Res. 69:223-231(1999).

---

Note: This product is for in vitro research use only