

CNOT2 (Phospho-Ser101) Antibody

Catalog No: #11810

Package Size: #11810-1 50ul #11810-2 100ul

Orders: order@signalwayantibody.comSupport: tech@signalwayantibody.com

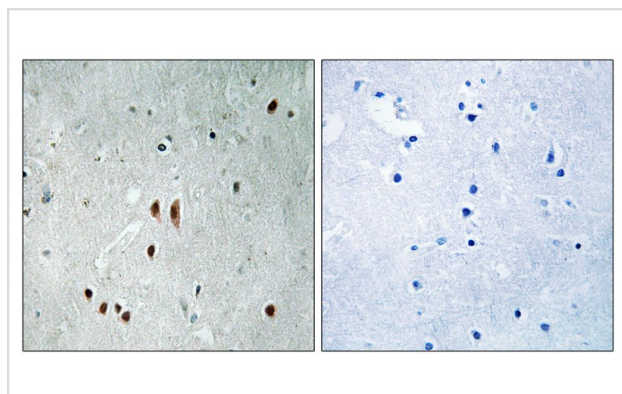
Description

Product Name	CNOT2 (Phospho-Ser101) Antibody
Host Species	Rabbit
Clonality	Polyclonal
Purification	Antibodies were produced by immunizing rabbits with synthetic phosphopeptide and KLH conjugates. Antibodies were purified by affinity-chromatography using epitope-specific phosphopeptide. Non-phospho specific antibodies were removed by chromatography using non-phosphopeptide.
Applications	IHC
Species Reactivity	Hu Ms Rt
Specificity	The antibody detects endogenous levels of CNOT2 only when phosphorylated at serine 101.
Immunogen Type	Peptide-KLH
Immunogen Description	Peptide sequence around phosphorylation site of Serine101(S-L-S(p)-Q-G) derived from Human CNOT2.
Target Name	CNOT2
Modification	Phospho
Other Names	NOT2H; CDC36; CNOT2; HSPC131;
Accession No.	Swiss-Prot#: Q9NZN8; NCBI Gene#: 4848; NCBI Protein#: NP_001186231.1.
Uniprot	Q9NZN8
GeneID	4848;
SDS-PAGE MW	59kd
Concentration	1.0mg/ml
Formulation	Rabbit IgG in phosphate buffered saline (without Mg ²⁺ and Ca ²⁺), pH 7.4, 150mM NaCl, 0.02% sodium azide and 50% glycerol.
Storage	Store at -20°C/1 year

Application Details

Immunohistochemistry: 1:50~1:100

Images



Immunohistochemical analysis of paraffin-embedded human brain tissue using CNOT2 (Phospho-Ser101) antibody #11810 (left) or the same antibody preincubated with blocking peptide (right).

Background

The CCR4-NOT complex functions as general transcription regulation complex. Subunit of the CCR4-NOT core complex that contains CHAF1A, CHAF1B, CNOT1, CNOT2, CNOT3, CNOT4, CNOT6 and CNOT8. 5 isoforms of the human protein are produced by alternative splicing.

Albert T.K., *Nucleic Acids Res.* 28:809-817(2000).

Zhang Q.-H., *Genome Res.* 10:1546-1560(2000).

Ota T., *Nat. Genet.* 36:40-45(2004).

Note: This product is for in vitro research use only