

TAL-1 (Phospho-Ser122) Antibody

Catalog No: #11814

Package Size: #11814-1 50ul #11814-2 100ul

Orders: order@signalwayantibody.com

Support: tech@signalwayantibody.com

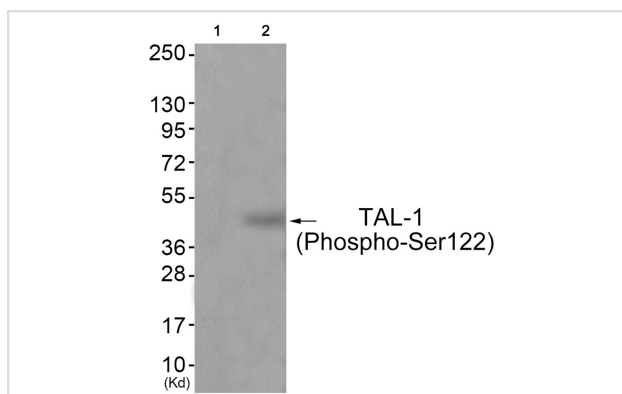
Description

Product Name	TAL-1 (Phospho-Ser122) Antibody
Host Species	Rabbit
Clonality	Polyclonal
Purification	Antibodies were produced by immunizing rabbits with synthetic phosphopeptide and KLH conjugates. Antibodies were purified by affinity-chromatography using epitope-specific phosphopeptide. Non-phospho specific antibodies were removed by chromatography using non-phosphopeptide.
Applications	WB
Species Reactivity	Hu Ms
Specificity	The antibody detects endogenous levels of TAL-1 only when phosphorylated at serine 122.
Immunogen Type	Peptide-KLH
Immunogen Description	Peptide sequence around phosphorylation site of Serine 122(Q-L-S(p)-P-P) derived from Human TAL-1.
Target Name	TAL-1
Modification	Phospho
Other Names	SCL; TAL1; TCL5;
Accession No.	Swiss-Prot#: P17542; NCBI Gene#: 6886; NCBI Protein#: NP_001274276.1.
Uniprot	P17542
GeneID	6886;
SDS-PAGE MW	45kd
Concentration	1.0mg/ml
Formulation	Rabbit IgG in phosphate buffered saline (without Mg ²⁺ and Ca ²⁺), pH 7.4, 150mM NaCl, 0.02% sodium azide and 50% glycerol.
Storage	Store at -20°C/1 year

Application Details

Western blotting: 1:500~1:1000

Images



Western blot analysis of extracts from JK cells (Lane 2), using TAL-1 (Phospho-Ser122) Antibody #11814. The lane on the left is treated with antigen-specific peptide.

Background

TAL-1 is a basic helix-loop-helix transcription. Regulates differentiation and survival during hemopoiesis. Implicated in the genesis of hemopoietic malignancies. It may play an important role in hemopoietic differentiation. Serves as a positive regulator of erythroid differentiation. Mutations are associated with T-cell leukemia and melanoma. Binds to the LIM domain containing protein Rhombotin-2.

Aplan P.D., Mol. Cell. Biol. 10:6426-6435(1990).

Gregory S.G., Nature 441:315-321(2006).

Chen Q., J. Exp. Med. 172:1403-1408(1990).

Note: This product is for in vitro research use only