

b-Catenin(Ab-37) Antibody

Catalog No: #21212

Package Size: #21212-1 50ul #21212-2 100ul

Orders: order@signalwayantibody.com

Support: tech@signalwayantibody.com

Description

Product Name	b-Catenin(Ab-37) Antibody
Host Species	Rabbit
Clonality	Polyclonal
Purification	Antibodies were produced by immunizing rabbits with synthetic peptide and KLH conjugates. Antibodies were purified by affinity-chromatography using epitope-specific peptide.
Applications	WB IHC IF
Species Reactivity	Hu Ms Rt
Specificity	The antibody detects endogenous level of total b-Catenin protein.
Immunogen Type	Peptide-KLH
Immunogen Description	Peptide sequence around aa. 35~39 (I-H-S-G-A) derived from Human b-Catenin.
Target Name	b-Catenin
Other Names	CTNNB1; CATNB; CTNB1; CTNNB;
Accession No.	Swiss-Prot: P35222NCBI Protein: NP_001091679.1
Uniprot	P35222
GeneID	1499;
Concentration	1.0mg/ml
Formulation	Supplied at 1.0mg/mL in phosphate buffered saline (without Mg ²⁺ and Ca ²⁺), pH 7.4, 150mM NaCl, 0.02% sodium azide and 50% glycerol.
Storage	Store at -20°C for long term preservation (recommended). Store at 4°C for short term use.

Application Details

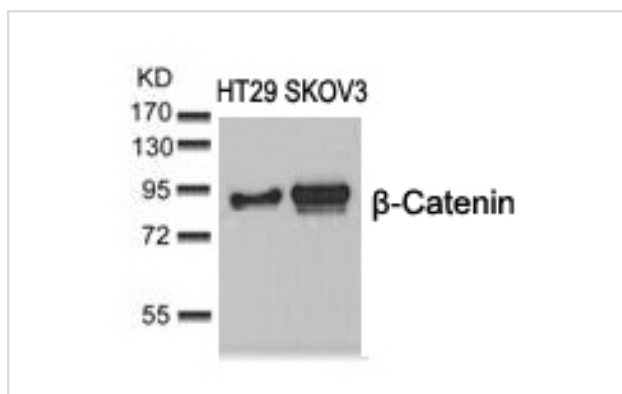
Predicted MW: 92kd

Western blotting: 1:500~1:1000

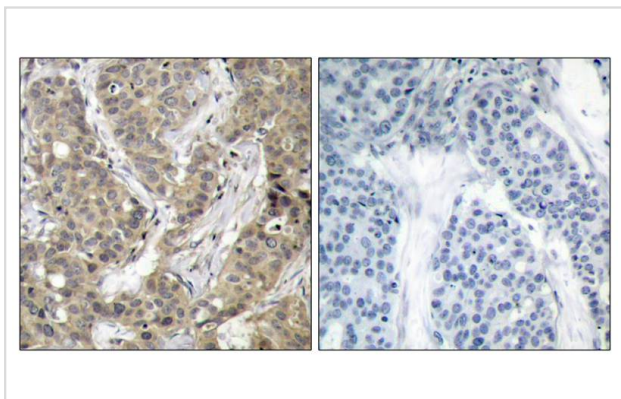
Immunohistochemistry: 1:50~1:100

Immunofluorescence: 1:100~1:200

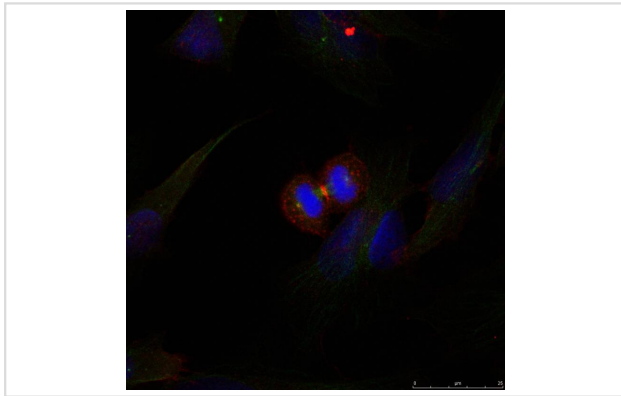
Images



Western blot analysis of extracts from HT29 and SKOV3 cells using b-Catenin(Ab-37) Antibody #21212.



Immunohistochemical analysis of paraffin-embedded human breast carcinoma tissue using b-Catenin(Ab-37) Antibody #21212(left) or the same antibody preincubated with blocking peptide(right).



Immunofluorescence staining of methanol-fixed HeLa cells using b-Catenin(Ab-37) Antibody #21212.

Background

Involved in the regulation of cell adhesion and in signal transduction through the Wnt pathway.

Note: This product is for in vitro research use only