

EGFR(Ab-1172) Antibody

Catalog No: #21213

Package Size: #21213-1 50ul #21213-2 100ul

Orders: order@signalwayantibody.com

Support: tech@signalwayantibody.com

Description

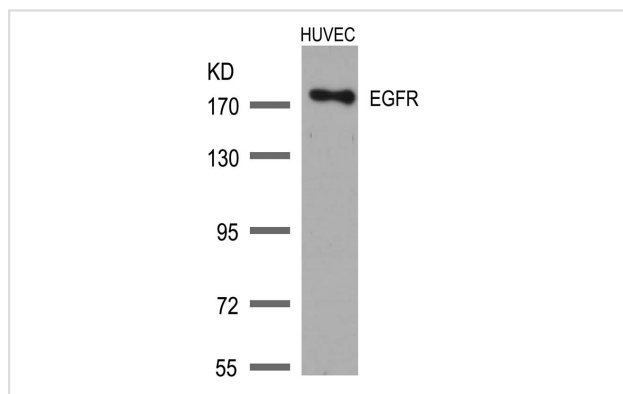
Product Name	EGFR(Ab-1172) Antibody
Host Species	Rabbit
Clonality	Polyclonal
Purification	Antibodies were produced by immunizing rabbits with synthetic peptide and KLH conjugates. Antibodies were purified by affinity-chromatography using epitope-specific peptide.
Applications	WB
Species Reactivity	Hu Ms Rt
Specificity	The antibody detects endogenous level of total EGFR protein.
Immunogen Type	Peptide-KLH
Immunogen Description	Peptide sequence around aa. 1170~1174 (P-D-Y-Q-Q) derived from Human EGFR.
Target Name	EGFR
Other Names	Receptor tyrosine-protein kinase ErbB-1
Accession No.	Swiss-Prot: P00533NCBI Protein: NP_005219.2
Uniprot	P00533
GeneID	1956;
Concentration	1.0mg/ml
Formulation	Supplied at 1.0mg/mL in phosphate buffered saline (without Mg ²⁺ and Ca ²⁺), pH 7.4, 150mM NaCl, 0.02% sodium azide and 50% glycerol.
Storage	Store at -20°C for long term preservation (recommended). Store at 4°C for short term use.

Application Details

Predicted MW: 175kd

Western blotting: 1:500~1:1000

Images



Western blot analysis of extracts from HUVEC cells using EGFR(Ab-1172) Antibody #21213.

Background

Receptor for EGF, but also for other members of the EGF family, as TGF- α , amphiregulin, betacellulin, heparin-binding EGF-like growth factor, GP30 and vaccinia virus growth factor. Is involved in the control of cell growth and differentiation. Phosphorylates MUC1 in breast cancer cells and increases the interaction of MUC1 with SRC and CTNNB1/beta-catenin.

Noguchi T, et al. (1994) Mol Cell Biol; 14(10): 6674-6682

Doherty JK, et al. (1999) Proc Natl Acad Sci U S A; 96(19): 10869-10874

Kanner SB, et al. (1991) Mol Cell Biol; 11(2): 713-720

Wu TT, et al. (1998) Mol Biol Cell; 9(7): 1661-1674

O

Note: This product is for in vitro research use only