

STAT1 Antibody

Catalog No: #32001

Package Size: #32001-1 50ul #32001-2 100ul

Orders: order@signalwayantibody.comSupport: tech@signalwayantibody.com

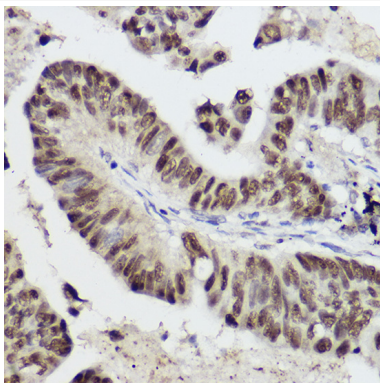
Description

Product Name	STAT1 Antibody
Host Species	Rabbit
Clonality	Polyclonal
Isotype	IgG
Purification	Affinity purification
Applications	WB,IHC
Species Reactivity	Human,Mouse,Rat
Specificity	The antibody detects endogenous level of total STAT1 protein.
Immunogen Type	Recombinant Protein
Immunogen Description	Recombinant fusion protein of human STAT1 (NP_644671.1).
Target Name	STAT1
Other Names	CANDF7;IMD31A;IMD31B;IMD31C;ISGF-3;STAT91;STAT1 alpha;STAT1
Accession No.	Uniprot:P42224GeneID:6772
Uniprot	P42224
GeneID	6772
SDS-PAGE MW	84KDa
Concentration	1.0mg/ml
Formulation	PBS with 0.02% sodium azide,50% glycerol,pH7.3.
Storage	Store at -20°C. Avoid freeze / thaw cycles.

Application Details

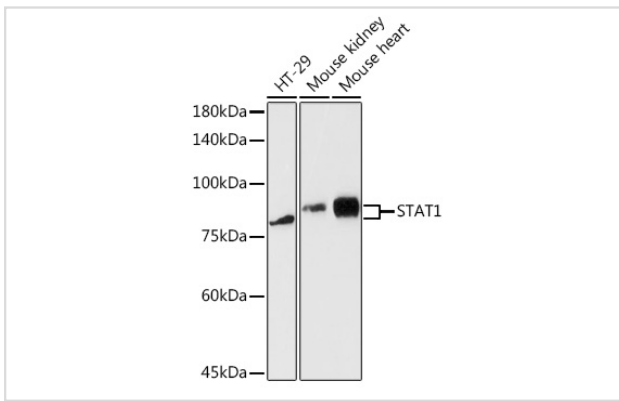
WB □ 1:500 - 1:2000 IHC □ 1:50 - 1:200

Images



Immunohistochemistry of paraffin-embedded human lung cancer using STAT1 Rabbit pAb.

Western blot analysis of extracts of various cell lines, using STAT1 antibody.



Background

The protein encoded by this gene is a member of the STAT protein family. In response to cytokines and growth factors, STAT family members are phosphorylated by the receptor associated kinases, and then form homo- or heterodimers that translocate to the cell nucleus where they act as transcription activators. This protein can be activated by various ligands including interferon-alpha, interferon-gamma, EGF, PDGF and IL6. This protein mediates the expression of a variety of genes, which is thought to be important for cell viability in response to different cell stimuli and pathogens. Two alternatively spliced transcript variants encoding distinct isoforms have been described.

Note: This product is for in vitro research use only