

BCL2 Antibody

Catalog No: #32012

Package Size: #32012-1 50ul #32012-2 100ul

Orders: order@signalwayantibody.com

Support: tech@signalwayantibody.com

Description

Product Name	BCL2 Antibody
Host Species	Rabbit
Clonality	Polyclonal
Purification	Antibodies were purified by affinity purification using immunogen.
Applications	WB,IHC,IF
Species Reactivity	Human,Mouse,Rat
Specificity	The antibody detects endogenous level of total BCL2 protein.
Immunogen Type	Peptide
Immunogen Description	The antiserum was produced against synthesized peptide derived from human BCL-2.
Target Name	BCL2
Other Names	BCL2; Bcl-2; ONCOGENEB-CELLLEUKEMIA2; ApoptosisregulatorBcl-2;
Accession No.	Swiss-Prot:P10415NCBI Gene ID:596
Uniprot	P10415
GeneID	596;
SDS-PAGE MW	26KD
Concentration	1.0mg/ml
Formulation	Liquid in PBS containing 50% glycerol, 0.5% BSA and 0.02% sodium azide.
Storage	Store at -20°C

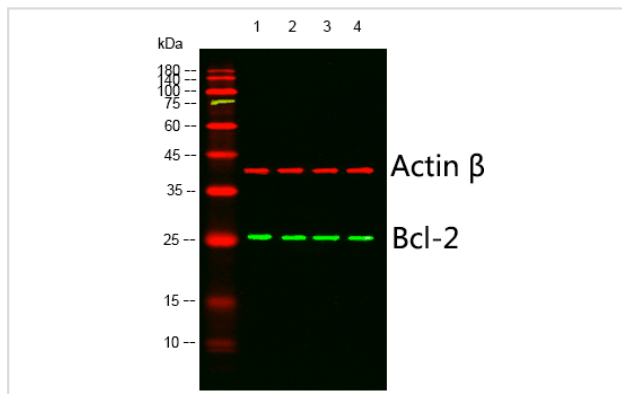
Application Details

WB 1:500 - 1:2000

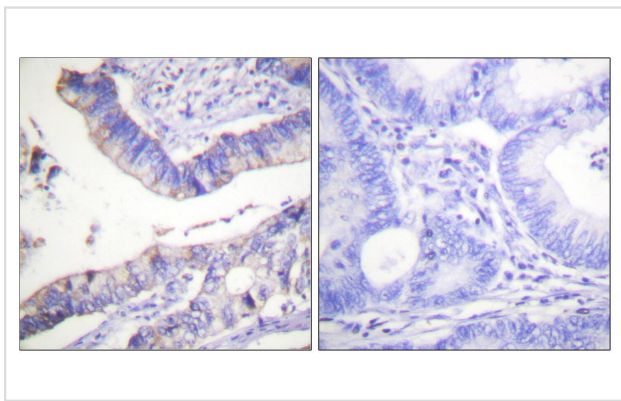
IHC 1:100- 1:300

IF 1:200 - 1:1000

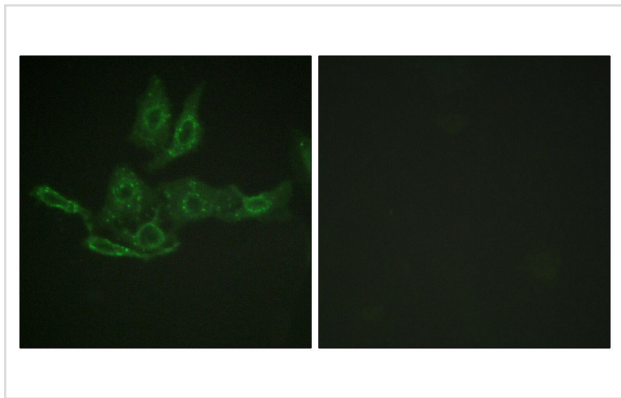
Images



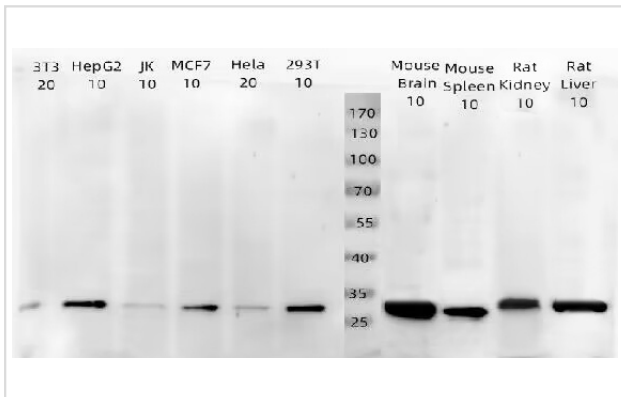
Western blot analysis of lysates from 1) mouse-liver, 2) mouse-brain, 3) mouse-lung, 4) mcf-7 cells, (Green) primary antibody was diluted at 1:1000, 4° over night, Dylight 800 secondary antibody was diluted at 1:10000, 37° 1hour. (Red) Actin β Monoclonal Antibody(5B7) antibody was diluted at 1:5000 as loading control, 4° over night, Dylight 680 secondary antibody was diluted at 1:10000, 37° 1hour.



Immunohistochemistry analysis of paraffin-embedded human colon carcinoma tissue, using BCL-2 Antibody. The picture on the right is blocked with the synthesized peptide.



Immunofluorescence analysis of HepG2 cells, using BCL-2 Antibody. The picture on the right is blocked with the synthesized peptide.



Lane1: 3T3 whole cell lysate
Lane2:HepG2 whole cell lysate
Lane3:JK whole cell lysate
Lane4: MCF7 whole cell lysate
Lane5: Hela whole cell lysate
Lane6:293T whole cell lysate
Lane7:Mouse Brain tissue lysate
Lane8:Mouse Spleen tissue lysate
Lane9:Rat Kidney tissue lysate
Lane10: Rat Liver tissue lysate
Secondary: Goat Anti-Rabbit IgG(HRP) at 1/20000 dilution
Predicted band size : 26kDa
Observed band size: 26kDa

Background

BCL2 exerts a survival function in response to a wide range of apoptotic stimuli through inhibition of mitochondrial cytochrome c release (1). It has been implicated in modulating mitochondrial calcium homeostasis and proton flux (2). Several phosphorylation sites have been identified within BCL2 including Thr56, Ser70, Thr74 and Ser87 (3). It has been suggested that these phosphorylation sites may be targets of the ASK1/MKK7/JNK1 pathway, and that phosphorylation of BCL2 may be a marker for mitotic events (4,5). Mutation of BCL2 at Thr56 or Ser87 inhibits its anti-apoptotic activity during glucocorticoid-induced apoptosis of T lymphocytes (6). Interleukin 3 and JNK-induced BCL2 phosphorylation at Ser70 may be required for its enhanced anti-apoptotic functions (7).

Note: This product is for in vitro research use only