

BVES Antibody

Catalog No: #32017

Package Size: #32017-1 50ul #32017-2 100ul

Orders: order@signalwayantibody.comSupport: tech@signalwayantibody.com

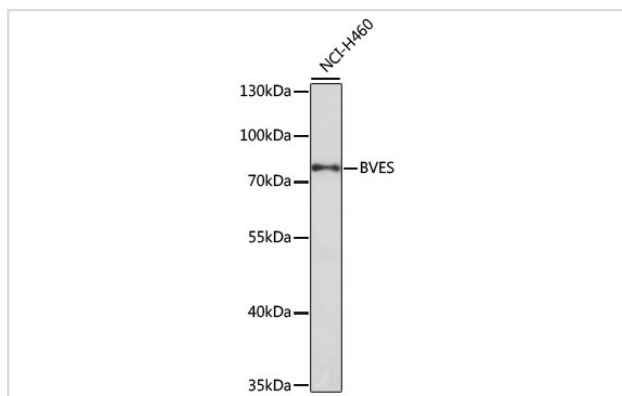
Description

| | |
|-----------------------|--|
| Product Name | BVES Antibody |
| Host Species | Rabbit |
| Clonality | Polyclonal |
| Isotype | IgG |
| Purification | Affinity purification |
| Applications | WB |
| Species Reactivity | Human,Mouse |
| Specificity | The antibody detects endogenous level of total BVES protein. |
| Immunogen Type | Recombinant Protein |
| Immunogen Description | Recombinant fusion protein of human BVES (NP_001186492.1). |
| Target Name | BVES |
| Other Names | BVES;HBVES;LGMD2X;POP1;POPDC1 |
| Accession No. | Uniprot:Q8NE79GeneID:11149 |
| Uniprot | Q8NE79 |
| GeneID | 11149 |
| SDS-PAGE MW | 70kDa |
| Concentration | 1.0mg/ml |
| Formulation | PBS with 0.02% sodium azide,50% glycerol,pH7.3. |
| Storage | Store at -20°C. Avoid freeze / thaw cycles. |

Application Details

WB □ 1:500 - 1:2000

Images



Western blot analysis of extracts of NCI-H460 cells, using BVES antibody.

Background

This gene encodes a member of the POP family of proteins containing three putative transmembrane domains. This gene is expressed in cardiac and skeletal muscle and may play an important role in development of these tissues. The mouse ortholog may be involved in the regeneration of adult skeletal muscle and may act as a cell adhesion molecule in coronary vasculogenesis. Three transcript variants encoding the same protein have been found for this gene.

Note: This product is for in vitro research use only