

CASP3 Antibody

Catalog No: #32018

Package Size: #32018-1 50ul #32018-2 100ul

Orders: order@signalwayantibody.comSupport: tech@signalwayantibody.com

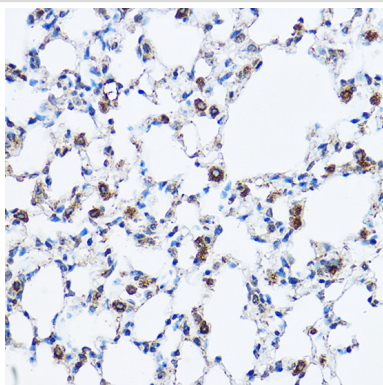
Description

Product Name	CASP3 Antibody
Host Species	Rabbit
Clonality	Polyclonal
Isotype	IgG
Purification	Affinity purification
Applications	WB,IHC,IF
Species Reactivity	Human,Mouse,Rat
Specificity	The antibody detects endogenous level of total CASP3 protein.
Immunogen Type	Recombinant Protein
Immunogen Description	A synthetic peptide of human Caspase-3 (NP_004337.2).
Target Name	CASP3
Other Names	CPP32;CPP32B;SCA-1;Active Caspase 3;CASP3;active Caspase-3;Caspase 3;Caspase-3 p12;caspase-3
Accession No.	Uniprot:P42574GeneID:836
Uniprot	P42574
GeneID	836
SDS-PAGE MW	32KDa
Concentration	1.0mg/ml
Formulation	PBS with 0.02% sodium azide,50% glycerol,pH7.3.
Storage	Store at -20°C. Avoid freeze / thaw cycles.

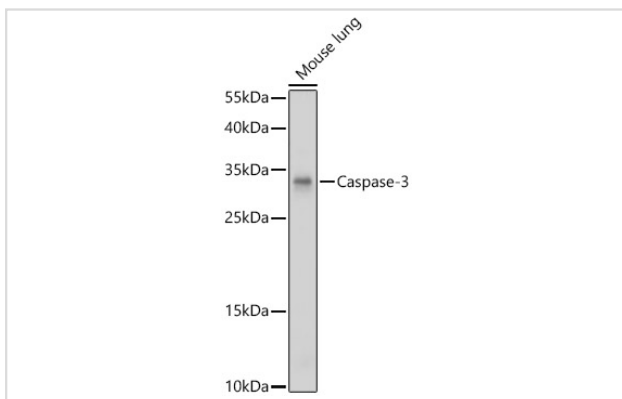
Application Details

WB □ 1:500 - 1:2000 IHC □ 1:50 - 1:200 IF □ 1:50 - 1:200

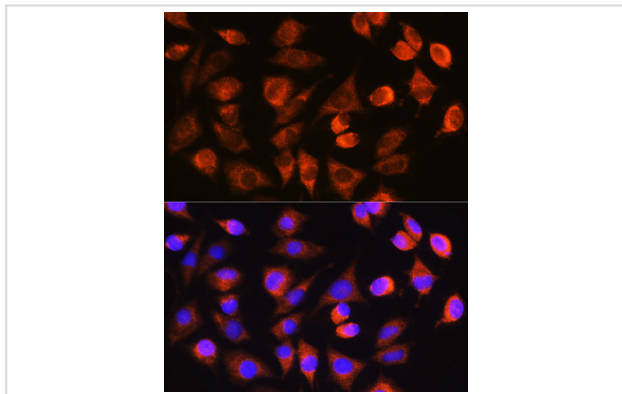
Images



Immunohistochemistry of paraffin-embedded mouse lung using Caspase-3 Rabbit pAb.



Western blot analysis of extracts of Mouse lung, using Caspase-3 antibody.



Immunofluorescence analysis of L929 cells using Caspase-3 Rabbit pAb.

Background

This gene encodes a protein which is a member of the cysteine-aspartic acid protease (caspase) family. Sequential activation of caspases plays a central role in the execution-phase of cell apoptosis. Caspases exist as inactive proenzymes which undergo proteolytic processing at conserved aspartic residues to produce two subunits, large and small, that dimerize to form the active enzyme. This protein cleaves and activates caspases 6, 7 and 9, and the protein itself is processed by caspases 8, 9 and 10. It is the predominant caspase involved in the cleavage of amyloid-beta 4A precursor protein, which is associated with neuronal death in Alzheimer's disease. Alternative splicing of this gene results in two transcript variants that encode the same protein.

Note: This product is for in vitro research use only