

CRP Antibody

Catalog No: #32023

Package Size: #32023-1 50ul #32023-2 100ul

Orders: order@signalwayantibody.com

Support: tech@signalwayantibody.com

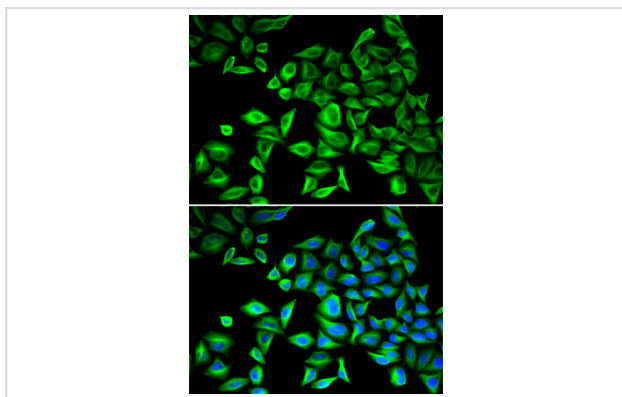
Description

Product Name	CRP Antibody
Host Species	Rabbit
Clonality	Polyclonal
Purification	Antibodies were purified by affinity purification using immunogen.
Applications	WB,IF
Species Reactivity	Human,Mouse,Rat
Specificity	The antibody detects endogenous level of total CRP protein.
Immunogen Type	Recombinant Protein
Immunogen Description	Recombinant protein of human CRP.
Target Name	CRP
Other Names	CRP; MGC149895; MGC88244; PTX1;
Accession No.	Swiss-Prot:P02741NCBI Gene ID:1401
Uniprot	P02741
GeneID	1401;
SDS-PAGE MW	25KD
Concentration	1.0mg/ml
Formulation	Supplied at 1.0mg/mL in phosphate buffered saline (without Mg ²⁺ and Ca ²⁺), pH 7.4, 150mM NaCl, 0.02% sodium azide and 50% glycerol.
Storage	Store at -20°C

Application Details

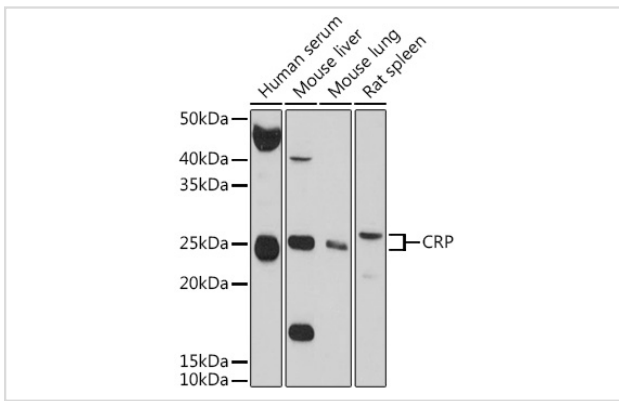
WB □ 1:500 - 1:2000IF □ 1:50 - 1:200

Images



Immunofluorescence analysis of HeLa cells using CRP . Blue: DAPI for nuclear staining.

Western blot analysis of extracts of various cell lines, using CRP at 1:1000 dilution.



Background

Human c-Reactive protein (CRP) was discovered in serum of patients as a nonantibody precipitin of the C-polysaccharide from pneumococci(1). During acute infection, the amounts of circulating CPR increases 100-1000 fold (2). Serum CRP values are routinely measured to detect or monitor many human diseases and minor elevations of C-reactive protein are predictive of cardiovascular events in patients with coronary heart disease (3). CRP promotes host defense, is an efficient activator of the classical C cascade, and shown to be opsonic (4).The opsonic and C activation activities are responsible for the nonspecific host defense activities providing protection in the preimmune stage of acute infections. Additionally, IL-1 and IL-6 are known to stimulate CRP biosynthesis (5).

Note: This product is for in vitro research use only