

CYCS Antibody

Catalog No: #32024

Package Size: #32024-1 50ul #32024-2 100ul

Orders: order@signalwayantibody.comSupport: tech@signalwayantibody.com

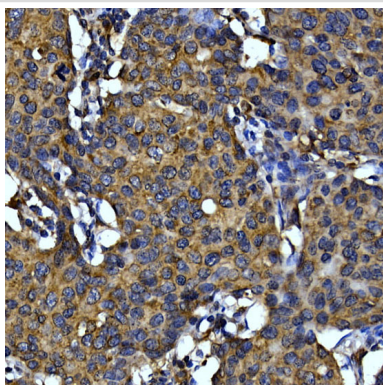
Description

Product Name	CYCS Antibody
Host Species	Rabbit
Clonality	Polyclonal
Isotype	IgG
Purification	Affinity purification
Applications	WB,IHC,IF
Species Reactivity	Human,Mouse,Rat
Specificity	The antibody detects endogenous level of total CYCS protein.
Immunogen Type	Recombinant Protein
Immunogen Description	Recombinant fusion protein of human Cytochrome C (NP_061820.1).
Target Name	CYCS
Other Names	CYCS;CYC;HCS;THC4;cytochrome c
Accession No.	Uniprot:P99999GeneID:54205
Uniprot	P99999
GeneID	54205
SDS-PAGE MW	14KDa
Concentration	1.0mg/ml
Formulation	PBS with 0.02% sodium azide,50% glycerol,pH7.3.
Storage	Store at -20°C. Avoid freeze / thaw cycles.

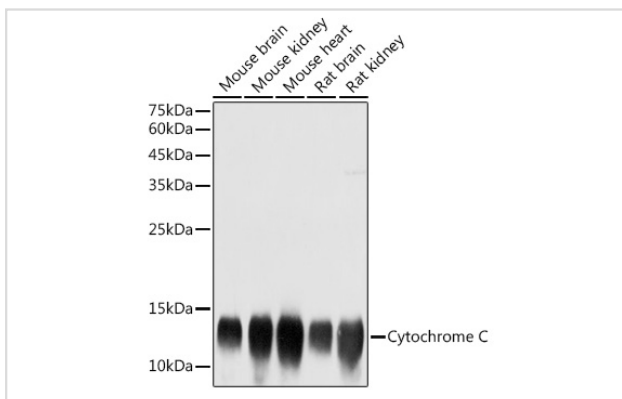
Application Details

WB □ 1:500 - 1:2000 IHC □ 1:50 - 1:200 IF □ 1:50 - 1:200

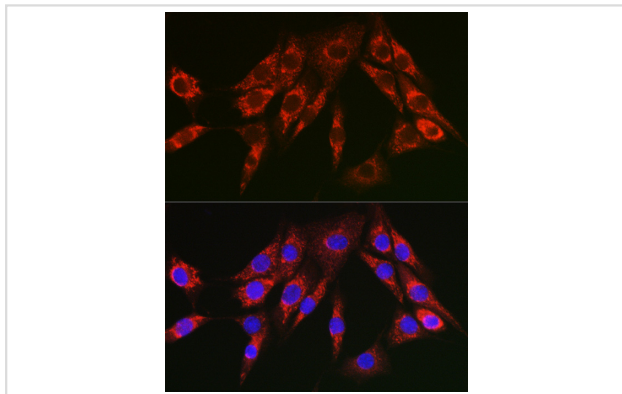
Images



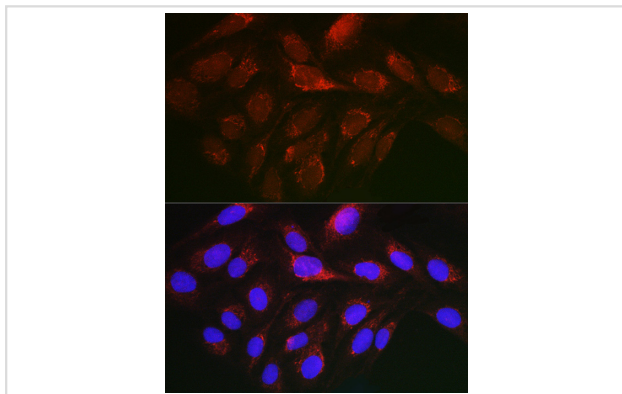
Immunohistochemistry of paraffin-embedded human breast cancer using Cytochrome C Rabbit pAb.



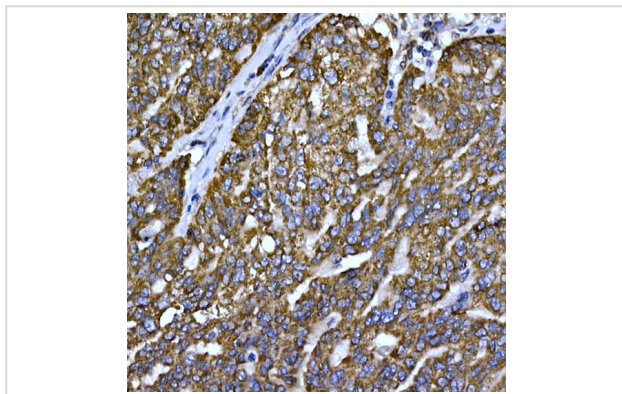
Western blot analysis of extracts of various cell lines, using Cytochrome C antibody.



Immunofluorescence analysis of NIH/3T3 cells using Cytochrome C Rabbit pAb.



Immunofluorescence analysis of U2OS cells using Cytochrome C Rabbit pAb.



Immunohistochemistry of paraffin-embedded human oophoroma using Cytochrome C Rabbit pAb.

Background

This gene encodes a small heme protein that functions as a central component of the electron transport chain in mitochondria. The encoded protein associates with the inner membrane of the mitochondrion where it accepts electrons from cytochrome b and transfers them to the cytochrome oxidase complex. This protein is also involved in initiation of apoptosis. Mutations in this gene are associated with autosomal dominant nonsyndromic thrombocytopenia. Numerous processed pseudogenes of this gene are found throughout the human genome.

Note: This product is for in vitro research use only