

IKBKE Antibody

Catalog No: #32038

Package Size: #32038-1 50ul #32038-2 100ul

Orders: order@signalwayantibody.comSupport: tech@signalwayantibody.com

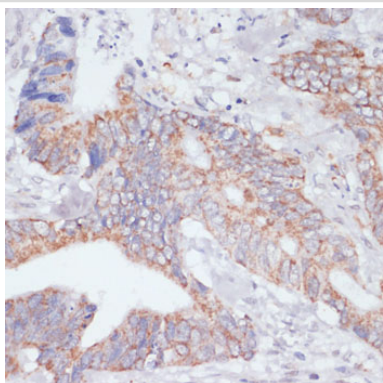
Description

Product Name	IKBKE Antibody
Host Species	Rabbit
Clonality	Polyclonal
Isotype	IgG
Purification	Affinity purification
Applications	WB,IHC
Species Reactivity	Human,Mouse,Rat
Specificity	The antibody detects endogenous level of total IKBKE protein.
Immunogen Type	Recombinant Protein
Immunogen Description	Recombinant fusion protein of human IKK α (NP_054721.1).
Target Name	IKBKE
Other Names	IKBKE;IKK-E;IKK-i;IKKE;IKKI
Accession No.	Uniprot:Q14164GeneID:9641
Uniprot	Q14164
GeneID	9641
SDS-PAGE MW	93kDa
Concentration	1.0mg/ml
Formulation	PBS with 0.02% sodium azide,50% glycerol,pH7.3.
Storage	Store at -20°C. Avoid freeze / thaw cycles.

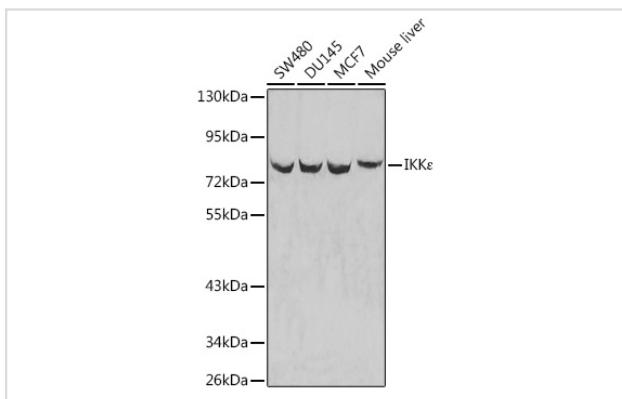
Application Details

WB 1:500 - 1:2000 IHC 1:50 - 1:200

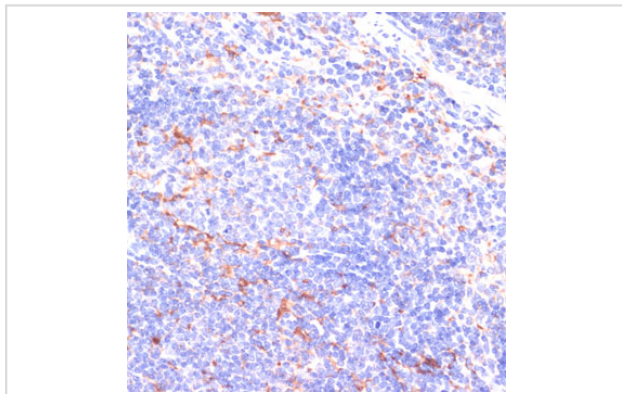
Images



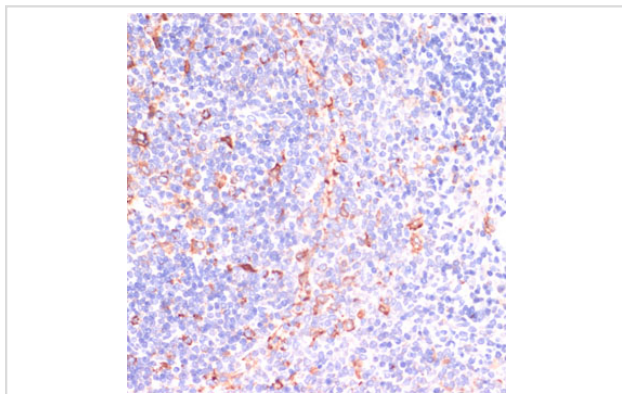
Immunohistochemistry of paraffin-embedded human colon carcinoma using IKK α antibody.



Western blot analysis of extracts of various cell lines, using IKKe antibody.



Immunohistochemistry of paraffin-embedded mouse spleen using IKKe antibody.



Immunohistochemistry of paraffin-embedded rat spleen using IKKe antibody.

Background

IKKe is a noncanonical I-kappa-B (see MIM 164008) kinase (IKK) that is essential for regulating antiviral signaling pathways. IKKe has also been identified as a breast cancer (MIM 114480) oncogene and is amplified and overexpressed in over 30% of breast carcinomas and breast cancer cell lines (Hutti et al., 2009 [PubMed 19481526]). [supplied by OMIM, Oct 2009]

Note: This product is for in vitro research use only