

## KRT19 Antibody

Catalog No: #32040

Package Size: #32040-1 50ul #32040-2 100ul

Orders: [order@signalwayantibody.com](mailto:order@signalwayantibody.com)Support: [tech@signalwayantibody.com](mailto:tech@signalwayantibody.com)

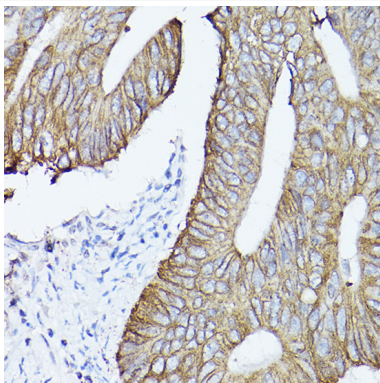
## Description

Product Name	KRT19 Antibody
Host Species	Rabbit
Clonality	Polyclonal
Isotype	IgG
Purification	Affinity purification
Applications	WB,IHC,IF
Species Reactivity	Human,Mouse,Rat
Specificity	The antibody detects endogenous level of total KRT19 protein.
Immunogen Type	Recombinant Protein
Immunogen Description	Recombinant fusion protein of human Cytokeratin 19 (Cytokeratin 19 (KRT19)) (NP_002267.2).
Target Name	KRT19
Other Names	CK19;K19;K1CS;KRT19
Accession No.	Uniprot:P08727GeneID:3880
Uniprot	P08727
GeneID	3880
SDS-PAGE MW	40KDa
Concentration	1.0mg/ml
Formulation	PBS with 0.02% sodium azide,50% glycerol,pH7.3.
Storage	Store at -20°C. Avoid freeze / thaw cycles.

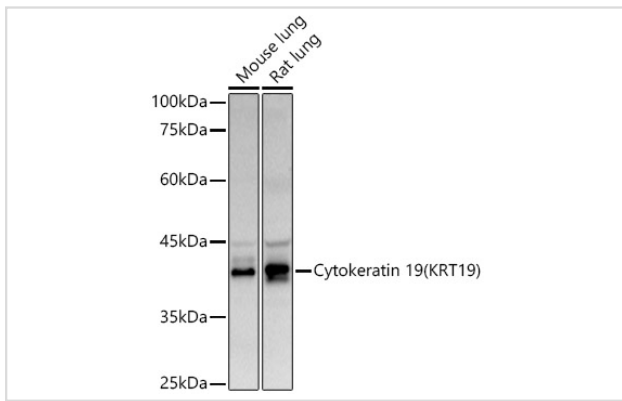
## Application Details

WB 1:500 - 1:2000 IHC 1:50 - 1:200 IF 1:50 - 1:200

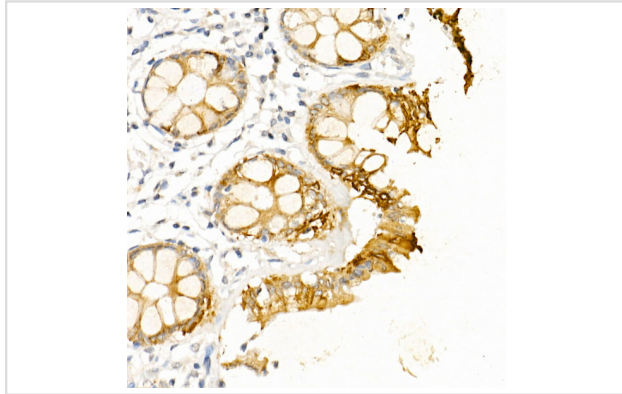
## Images



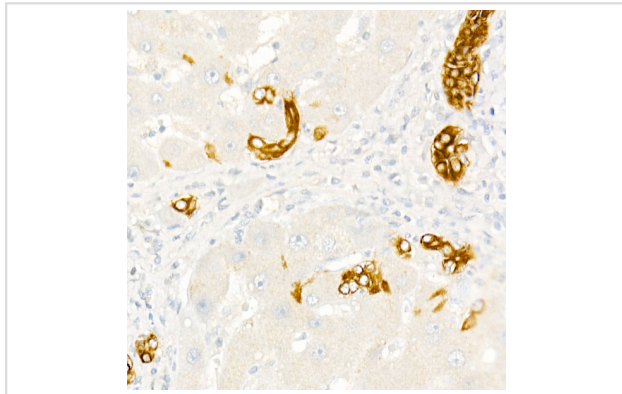
Immunohistochemistry of paraffin-embedded human colon carcinoma using Cytokeratin 19 (Cytokeratin 19 (KRT19)) Rabbit pAb.



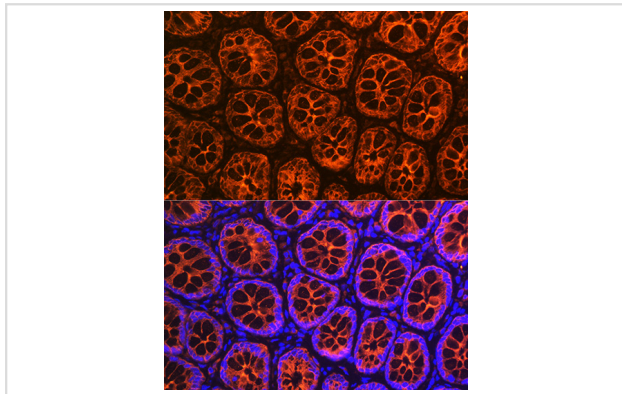
Western blot analysis of extracts of various cell lines, using Cytokeratin 19 (KRT19) antibody.



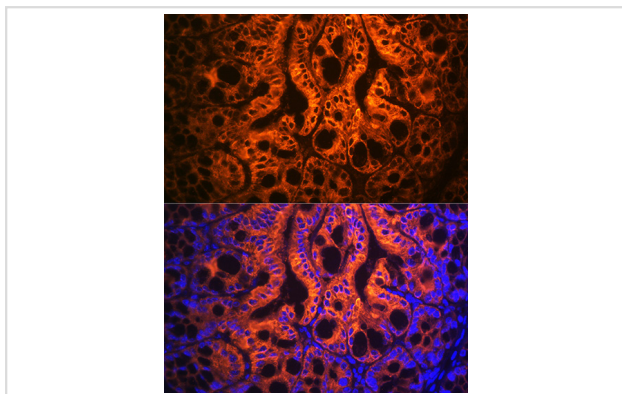
Immunohistochemistry of paraffin-embedded human colon using Cytokeratin 19 (KRT19) Rabbit pAb.



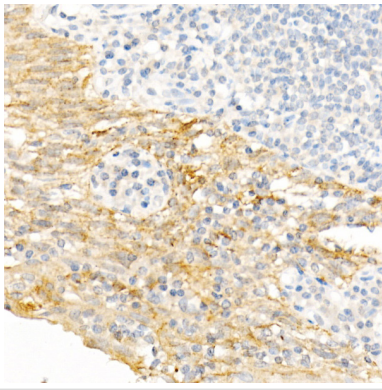
Immunohistochemistry of paraffin-embedded Human liver (negative control sample) using Cytokeratin 19 (KRT19) Rabbit pAb.



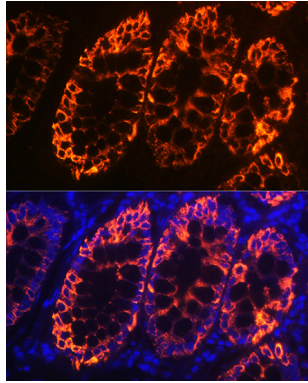
Immunofluorescence analysis of Rat rectum using Cytokeratin 19 (Cytokeratin 19 (KRT19)) antibody.



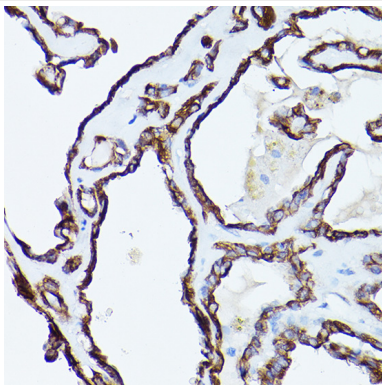
Immunofluorescence analysis of Mouse large intestine using Cytokeratin 19 (Cytokeratin 19 (KRT19)) antibody.



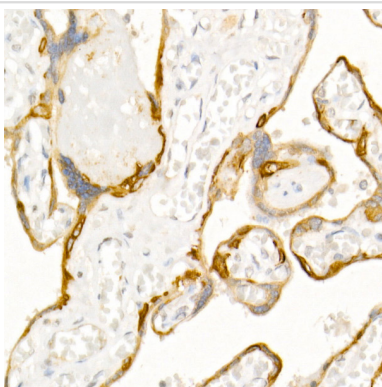
Immunohistochemistry of paraffin-embedded human tonsil using Cytokeratin 19 (KRT19) Rabbit pAb.



Immunofluorescence analysis of Human colon carcinoma using Cytokeratin 19 (Cytokeratin 19 (KRT19)) antibody.



Immunohistochemistry of paraffin-embedded human thyroid cancer using Cytokeratin 19 (Cytokeratin 19 (KRT19)) Rabbit pAb.



Immunohistochemistry of paraffin-embedded human placenta using Cytokeratin 19 (KRT19) Rabbit pAb.

## Background

The protein encoded by this gene is a member of the keratin family. The keratins are intermediate filament proteins responsible for the structural integrity of epithelial cells and are subdivided into cytokeratins and hair keratins. The type I cytokeratins consist of acidic proteins which are arranged in pairs of heterotypic keratin chains. Unlike its related family members, this smallest known acidic cytokeratin is not paired with a basic cytokeratin in epithelial cells. It is specifically expressed in the periderm, the transiently superficial layer that envelops the developing epidermis. The type I cytokeratins are clustered in a region of chromosome 17q12-q21.

---

Note: This product is for in vitro research use only