

MAP2K1 Antibody

Catalog No: #32044

Package Size: #32044-1 50ul #32044-2 100ul

Orders: order@signalwayantibody.comSupport: tech@signalwayantibody.com

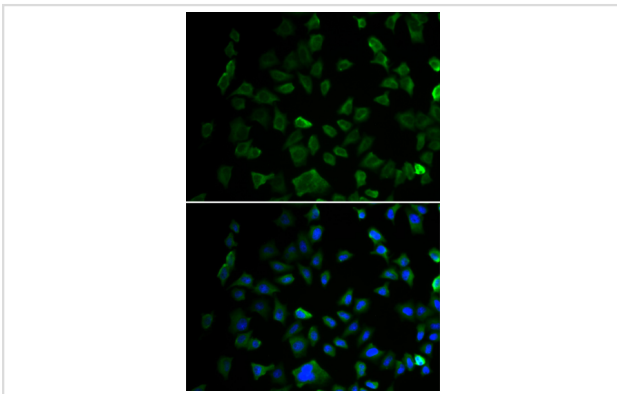
Description

Product Name	MAP2K1 Antibody
Host Species	Rabbit
Clonality	Polyclonal
Isotype	IgG
Purification	Affinity purification
Applications	WB,IF
Species Reactivity	Human,Mouse,Rat
Specificity	The antibody detects endogenous level of total MAP2K1 protein.
Immunogen Type	Peptide
Immunogen Description	A synthetic peptide of human MEK1 (NP_002746.1).
Target Name	MAP2K1
Other Names	CFC3;MAPKK1;MEK1;MKK1;PRKMK1;MAP2K1
Accession No.	Uniprot:Q02750GeneID:5604
Uniprot	Q02750
GeneID	5604
SDS-PAGE MW	46kDa
Concentration	1.0mg/ml
Formulation	PBS with 0.02% sodium azide,50% glycerol,pH7.3.
Storage	Store at -20°C. Avoid freeze / thaw cycles.

Application Details

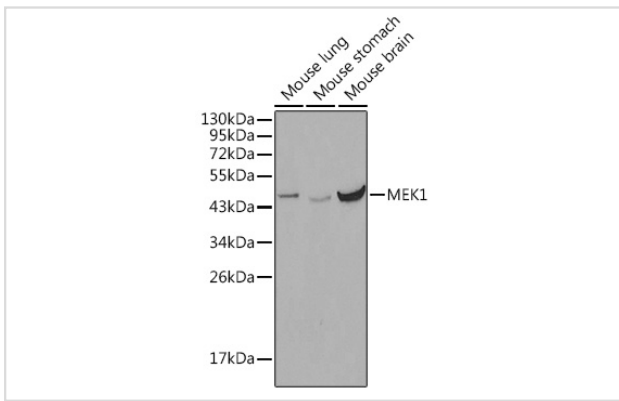
WB □ 1:500 - 1:2000IF □ 1:50 - 1:100

Images



Immunofluorescence analysis of U2OS cells using MEK1 antibody.

Western blot analysis of extracts of various cell lines, using MEK1 antibody.



Background

The protein encoded by this gene is a member of the dual specificity protein kinase family, which acts as a mitogen-activated protein (MAP) kinase kinase. MAP kinases, also known as extracellular signal-regulated kinases (ERKs), act as an integration point for multiple biochemical signals. This protein kinase lies upstream of MAP kinases and stimulates the enzymatic activity of MAP kinases upon wide variety of extra- and intracellular signals. As an essential component of MAP kinase signal transduction pathway, this kinase is involved in many cellular processes such as proliferation, differentiation, transcription regulation and development.

Note: This product is for in vitro research use only