

PARK2 Antibody

Catalog No: #32097

Package Size: #32097-1 50ul #32097-2 100ul

Orders: order@signalwayantibody.comSupport: tech@signalwayantibody.com

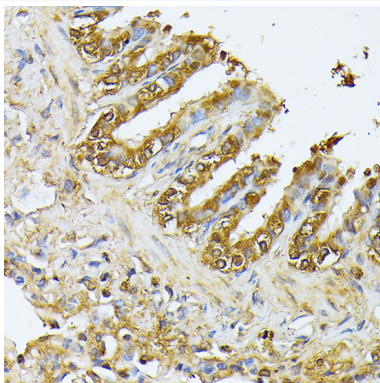
Description

Product Name	PARK2 Antibody
Host Species	Rabbit
Clonality	Polyclonal
Purification	Antibodies were purified by affinity purification using immunogen.
Applications	WB,IHC,IF
Species Reactivity	Human,Mouse,Rat
Specificity	The antibody detects endogenous level of total PARK2 protein.
Immunogen Type	Recombinant Protein
Immunogen Description	Recombinant protein of human PARK2.
Target Name	PARK2
Other Names	PARK2; AR-JP; LPRS2; PDJ; PRKN
Accession No.	Swiss-Prot:O60260NCBI Gene ID:5071
Uniprot	O60260
GeneID	5071;
SDS-PAGE MW	52KD
Concentration	1.0mg/ml
Formulation	Supplied at 1.0mg/mL in phosphate buffered saline (without Mg ²⁺ and Ca ²⁺), pH 7.4, 150mM NaCl, 0.02% sodium azide and 50% glycerol.
Storage	Store at -20°C

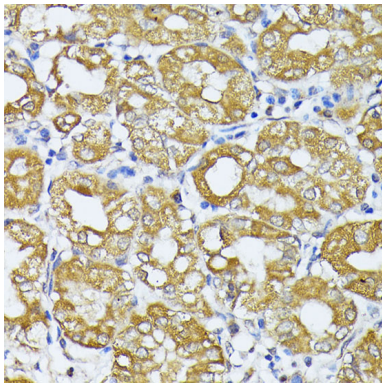
Application Details

WB □ 1:500 - 1:2000 IHC □ 1:50 - 1:200 IF □ 1:50 - 1:200

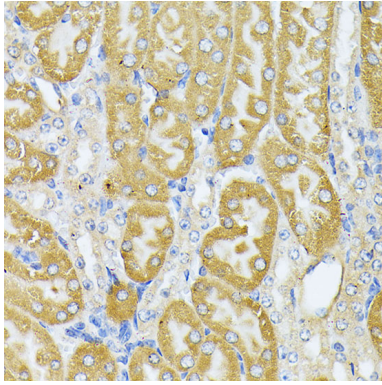
Images



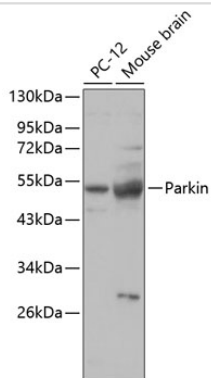
Immunohistochemistry of paraffin-embedded Rat lung using Parkin at dilution of 1:100 (40x lens).



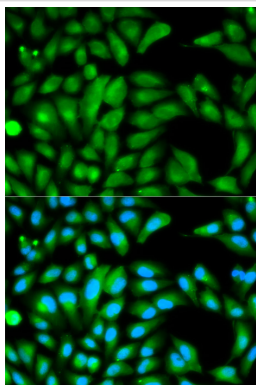
Immunohistochemistry of paraffin-embedded Human stomach using Parkin at dilution of 1:100 (40x lens).



Immunohistochemistry of paraffin-embedded Mouse kidney using Parkin at dilution of 1:100 (40x lens).



Western blot analysis of extracts of various cell lines, using Parkin at 1:1000 dilution.



Immunofluorescence analysis of HeLa cells using Parkin .

Background

Parkin is a protein of 465 amino acids with an amino-terminal ubiquitin domain and a carboxy-terminal RING-box (1). In the case of autosomal recessive juvenile Parkinsonism (AR-JP), deletions have been found in the gene on chromosome 6 encoding the protein Parkin (2).

Note: This product is for in vitro research use only