

SYT1 Antibody

Catalog No: #32113

Package Size: #32113-1 50ul #32113-2 100ul

Orders: order@signalwayantibody.comSupport: tech@signalwayantibody.com

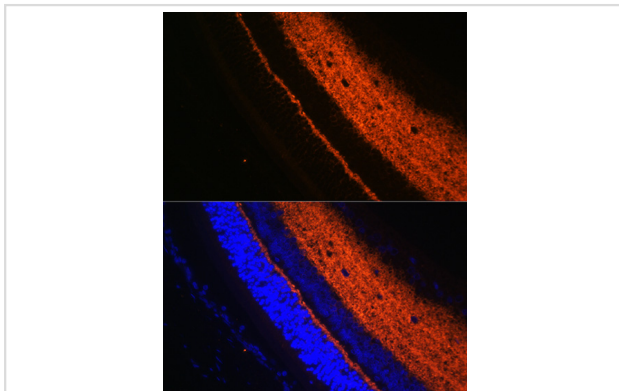
Description

Product Name	SYT1 Antibody
Host Species	Rabbit
Clonality	Polyclonal
Isotype	IgG
Purification	Affinity purification
Applications	WB,IF
Species Reactivity	Human,Mouse,Rat
Specificity	The antibody detects endogenous level of total SYT1 protein.
Immunogen Type	Recombinant Protein
Immunogen Description	Recombinant fusion protein of human SYT1 (NP_001129278.1).
Target Name	SYT1
Other Names	SYT1;P65;SVP65;SYT
Accession No.	Uniprot:P21579GenelD:6857
Uniprot	P21579
GenelD	6857
SDS-PAGE MW	60kDa
Concentration	1.0mg/ml
Formulation	PBS with 0.02% sodium azide,50% glycerol,pH7.3.
Storage	Store at -20°C. Avoid freeze / thaw cycles.

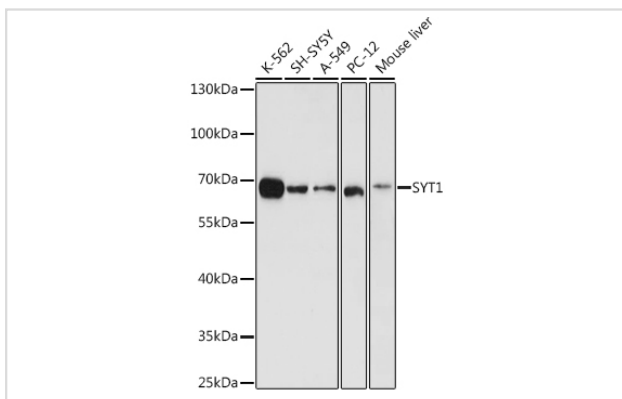
Application Details

WB □ 1:500 - 1:2000 IF □ 1:50 - 1:200

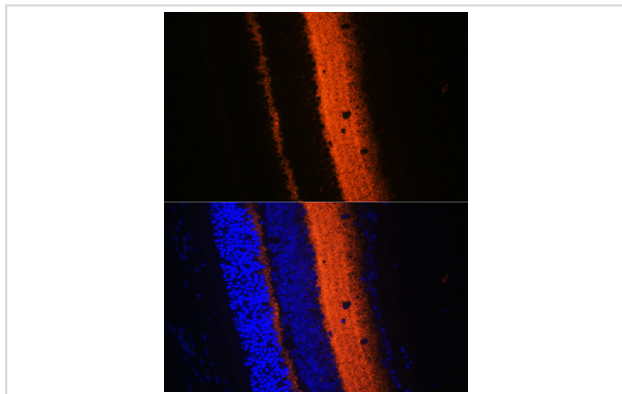
Images



Immunofluorescence analysis of rat eye using SYT1 Rabbit pAb.



Western blot analysis of extracts of various cell lines, using SYT1 antibody.



Immunofluorescence analysis of mouse eye using SYT1 Rabbit pAb.

Background

The synaptotagmins are integral membrane proteins of synaptic vesicles thought to serve as Ca^{2+} sensors in the process of vesicular trafficking and exocytosis. Calcium binding to synaptotagmin-1 participates in triggering neurotransmitter release at the synapse (Fernandez-Chacon et al., 2001 [PubMed 11242035]). [supplied by OMIM, Jul 2010]

Note: This product is for in vitro research use only