

## eIF4E(Ab-209) Antibody

Catalog No: #21226

Package Size: #21226-1 50ul #21226-2 100ul

Orders: order@signalwayantibody.com

Support: tech@signalwayantibody.com

## Description

|                       |   |
|-----------------------|---|
| Product Name          | eIF4E(Ab-209) Antibody  |
| Host Species          | Rabbit  |
| Clonality             | Polyclonal  |
| Purification          | Antibodies were produced by immunizing rabbits with synthetic peptide and KLH conjugates. Antibodies were purified by affinity-chromatography using epitope-specific peptide. |
| Applications          | WB IHC IF   |
| Species Reactivity    | Hu Ms Rt  |
| Specificity           | The antibody detects endogenous level of total eIF4E protein.   |
| Immunogen Type        | Peptide-KLH   |
| Immunogen Description | Peptide sequence around aa. 207~211 (S-G-S-T-T) derived from Human eIF4E.   |
| Target Name           | eIF4E   |
| Other Names           | mRNA cap-binding protein; eIF-4F 25 kDa subunit;  |
| Accession No.         | Swiss-Prot: P06730NCBI Protein: NP_001124150.1  |
| Uniprot               | P06730  |
| GeneID                | 1977;   |
| Concentration         | 1.0mg/ml  |
| Formulation           | Supplied at 1.0mg/mL in phosphate buffered saline (without Mg <sup>2+</sup> and Ca <sup>2+</sup> ), pH 7.4, 150mM NaCl, 0.02% sodium azide and 50% glycerol.                  |
| Storage               | Store at -20°C for long term preservation (recommended). Store at 4°C for short term use.   |

## Application Details

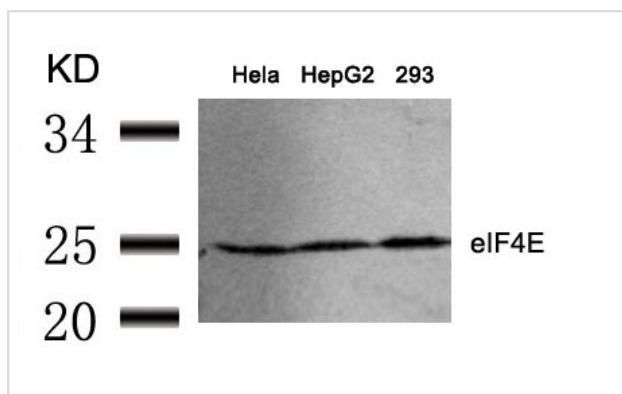
Predicted MW: 25kd

Western blotting: 1:500~1:1000

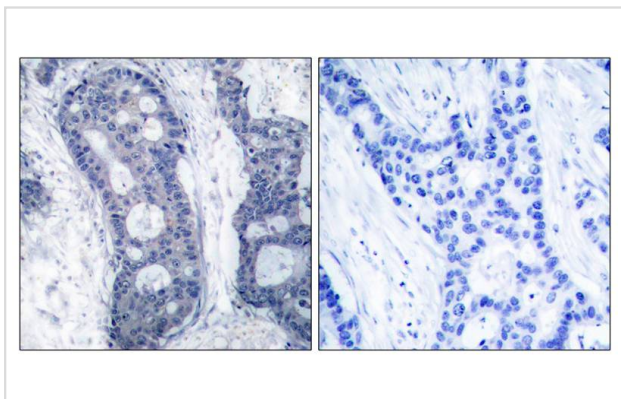
Immunohistochemistry: 1:50~1:100

Immunofluorescence: 1:100~1:200

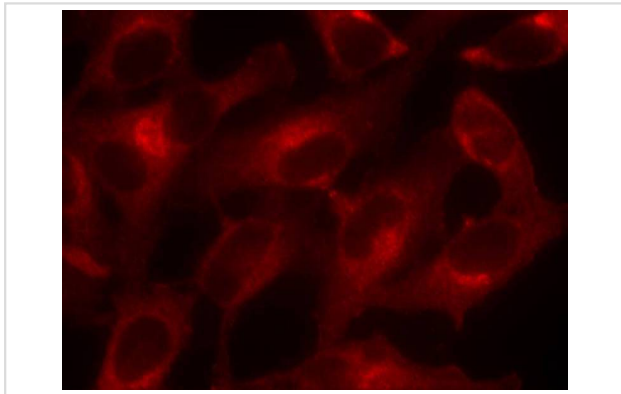
## Images



Western blot analysis of extracts from HeLa, HepG2 and 293 cells using eIF4E(Ab-209) Antibody #21226.



Immunohistochemical analysis of paraffin-embedded human breast carcinoma tissue using eIF4E(Ab-209) Antibody #21226(left) or the same antibody preincubated with blocking peptide(right).



Immunofluorescence staining of methanol-fixed HeLa cells using eIF4E(Ab-209) Antibody #21226.

## Background

Recognizes and binds the 7-methylguanosine-containing mRNA cap during an early step in the initiation of protein synthesis and facilitates ribosome binding by inducing the unwinding of the mRNAs secondary structures.

Li BD, et al. (1998) *Ann Surg*; 227(5): 756-763

Altmann M, et al. (1989) *Nucleic Acids Res*; 17(18): 7520

De Gregorio E, et al. (2001) *RNA*; 7(1): 106-113

Gu W, et al. (2004) *Nucleic Acids Res*; 32(15): 4448-4461

Ohlmann T, et al. (1996) *EMBO J*; 15(6): 1371-1382

Note: This product is for in vitro research use only