

ADA Antibody

Catalog No: #32121

Package Size: #32121-1 50ul #32121-2 100ul

Orders: order@signalwayantibody.com

Support: tech@signalwayantibody.com

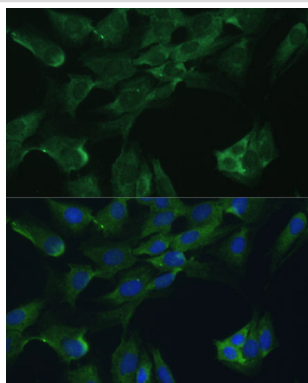
Description

Product Name	ADA Antibody
Host Species	Rabbit
Clonality	Polyclonal
Purification	Antibodies were purified by affinity purification using immunogen.
Applications	WB,IF
Species Reactivity	Human,Mouse,Rat
Specificity	The antibody detects endogenous level of total ADA protein.
Immunogen Type	Recombinant Protein
Immunogen Description	Recombinant protein of human ADA.
Target Name	ADA
Other Names	ADA1; ADA;
Accession No.	Swiss-Prot:P00813NCBI Gene ID:100
Uniprot	P00813
GeneID	100;
SDS-PAGE MW	41KD
Concentration	1.0mg/ml
Formulation	Supplied at 1.0mg/mL in phosphate buffered saline (without Mg ²⁺ and Ca ²⁺), pH 7.4, 150mM NaCl, 0.02% sodium azide and 50% glycerol.
Storage	Store at -20°C

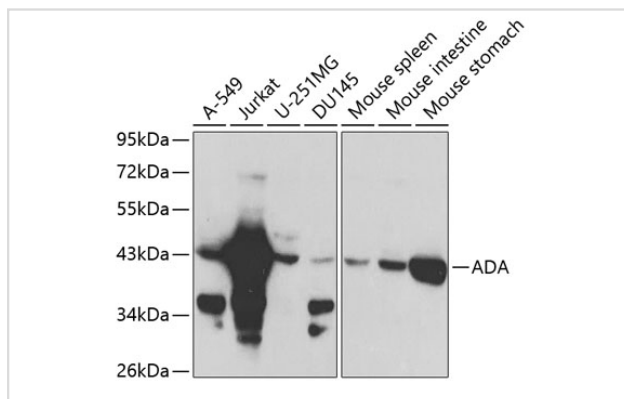
Application Details

WB □ 1:500 - 1:2000 IF □ 1:50 - 1:200

Images



Immunofluorescence analysis of C6 cells using ADA at dilution of 1:100. Blue: DAPI for nuclear staining.



Western blot analysis of extracts of various cell lines, using ADA at 1:1000 dilution.

Background

This gene encodes an enzyme that catalyzes the hydrolysis of adenosine to inosine. Various mutations have been described for this gene and have been linked to human diseases. Deficiency in this enzyme causes a form of severe combined immunodeficiency disease (SCID), in which there is dysfunction of both B and T lymphocytes with impaired cellular immunity and decreased production of immunoglobulins, whereas elevated levels of this enzyme have been associated with congenital hemolytic anemia.

Note: This product is for in vitro research use only