

## SERPINA3 Antibody

Catalog No: #32122

Package Size: #32122-1 50ul #32122-2 100ul

Orders: order@signalwayantibody.com

Support: tech@signalwayantibody.com

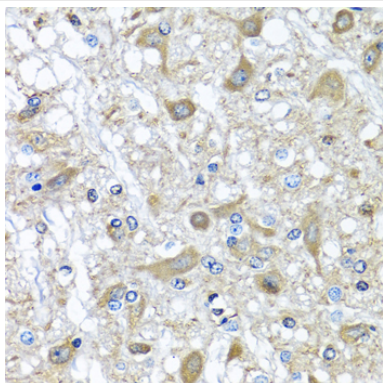
## Description

Product Name	SERPINA3 Antibody
Host Species	Rabbit
Clonality	Polyclonal
Isotype	IgG
Purification	Affinity purification
Applications	WB,IHC
Species Reactivity	Human,Mouse,Rat
Specificity	The antibody detects endogenous level of total SERPINA3 protein.
Immunogen Type	Recombinant Protein
Immunogen Description	Recombinant fusion protein of human Alpha-1 Antichymotrypsin (Alpha-1 Antichymotrypsin (SERPINA3)) (NP_001076.2).
Target Name	SERPINA3
Other Names	SERPINA3;AACT;ACT;GIG24;GIG25
Accession No.	Uniprot:P01011GeneID:12
Uniprot	P01011
GeneID	12
SDS-PAGE MW	70KDa
Concentration	1.0mg/ml
Formulation	PBS with 0.02% sodium azide,50% glycerol,pH7.3.
Storage	Store at -20°C. Avoid freeze / thaw cycles.

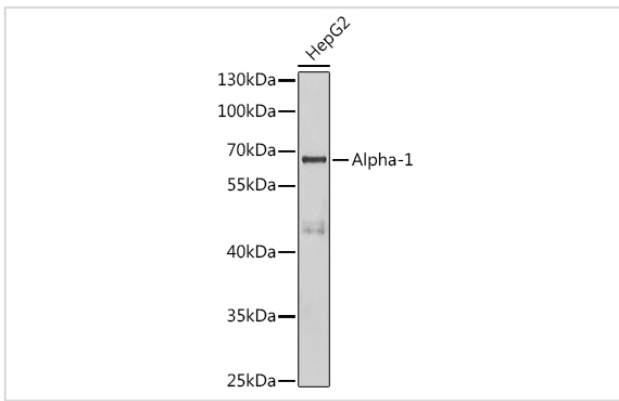
## Application Details

WB □ 1:500 - 1:2000 IHC □ 1:50 - 1:100

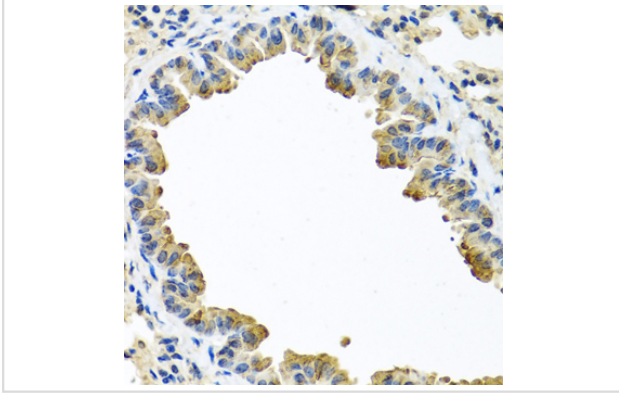
## Images



Immunohistochemistry of paraffin-embedded rat brain using Alpha-1 Antichymotrypsin (Alpha-1 Antichymotrypsin (SERPINA3)) antibody.



Western blot analysis of extracts of HepG2 cells, using Alpha-1 Antichymotrypsin (SERPINA3) antibody.



Immunohistochemistry of paraffin-embedded mouse lung using Alpha-1 Antichymotrypsin (Alpha-1 Antichymotrypsin (SERPINA3)) antibody.

## Background

The protein encoded by this gene is a plasma protease inhibitor and member of the serine protease inhibitor class. Polymorphisms in this protein appear to be tissue specific and influence protease targeting. Variations in this protein's sequence have been implicated in Alzheimer's disease, and deficiency of this protein has been associated with liver disease. Mutations have been identified in patients with Parkinson disease and chronic obstructive pulmonary disease.

Note: This product is for in vitro research use only