

## YWHAB Antibody

Catalog No: #32123

Package Size: #32123-1 50ul #32123-2 100ul

Orders: order@signalwayantibody.com

Support: tech@signalwayantibody.com

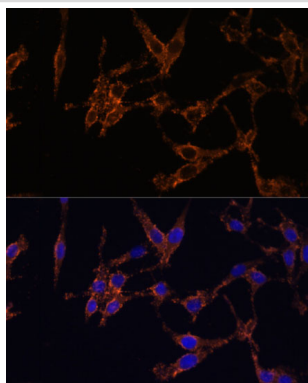
## Description

Product Name	YWHAB Antibody
Host Species	Rabbit
Clonality	Polyclonal
Purification	Antibodies were purified by affinity purification using immunogen.
Applications	WB,IHC,IF
Species Reactivity	Human,Mouse,Rat
Specificity	The antibody detects endogenous level of total YWHAB protein.
Immunogen Type	Recombinant Protein
Immunogen Description	Recombinant protein of human YWHAB.
Target Name	YWHAB
Other Names	YWHAB; GW128; HS1; KCIP-1; 14-3-3,
Accession No.	Swiss-Prot:P31946NCBI Gene ID:7529
Uniprot	P31946
GeneID	7529;
SDS-PAGE MW	6KD
Concentration	1.0mg/ml
Formulation	Supplied at 1.0mg/mL in phosphate buffered saline (without Mg <sup>2+</sup> and Ca <sup>2+</sup> ), pH 7.4, 150mM NaCl, 0.02% sodium azide and 50% glycerol.
Storage	Store at -20°C

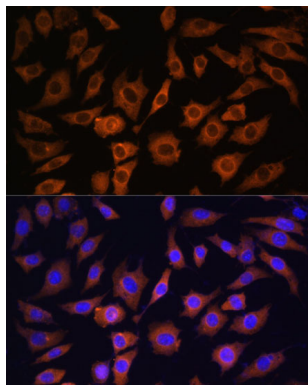
## Application Details

WB 1:500 - 1:2000 IHC 1:50 - 1:100 IF 1:50 - 1:200 IP 1:50 - 1:200

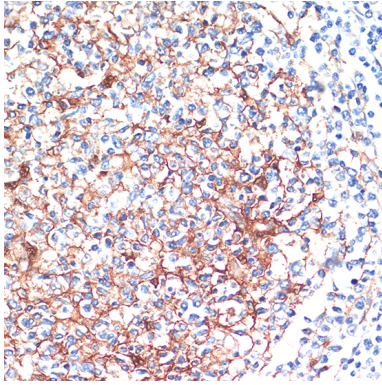
## Images



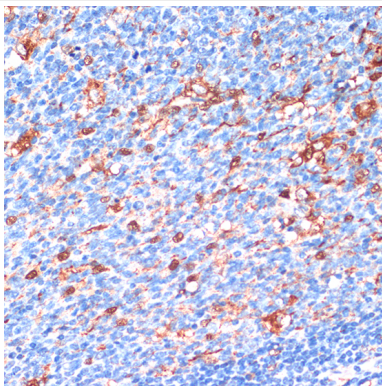
Immunofluorescence analysis of HeLa cells using YWHAB at dilution of 1:100. Blue: DAPI for nuclear staining.



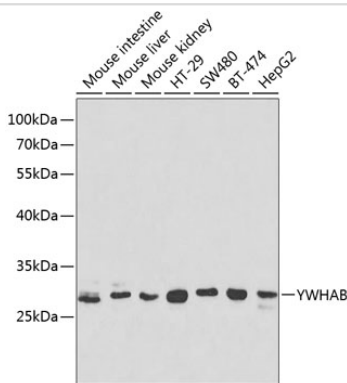
Immunofluorescence analysis of L929 cells using YWHAB at dilution of 1:100. Blue: DAPI for nuclear staining.



Immunohistochemistry of paraffin-embedded Human tonsil using YWHAB at dilution of 1:200 (40x lens).



Immunohistochemistry of paraffin-embedded Human appendix using YWHAB at dilution of 1:200 (40x lens).



Western blot analysis of extracts of various cell lines, using YWHAB at 1:1000 dilution.

## Background

The 14-3-3 family of proteins plays a key regulatory role in signal transduction, checkpoint control, apoptotic and nutrient-sensing pathways (1,2). 14-3-3 proteins are highly conserved and ubiquitously expressed. There are at least seven isoforms,  $\beta$ ,  $\gamma$ ,  $\epsilon$ ,  $\sigma$ ,  $\zeta$ ,  $\tau$ , and  $\eta$  that have been identified in mammals. The initially described  $\alpha$  and  $\delta$  isoforms are confirmed to be phosphorylated forms of  $\beta$  and  $\zeta$ , respectively (3). Through their amino-terminal  $\alpha$  helical region, 14-3-3 proteins form homo- or heterodimers that interact with a wide variety of proteins: transcription factors, metabolic enzymes, cytoskeletal proteins, kinases, phosphatases, and other signaling molecules (3,4). The interaction of 14-3-3 proteins with their targets is primarily through a phospho-Ser/Thr motif. However, binding to divergent phospho-Ser/Thr motifs, as well as phosphorylation-independent interactions, has been observed (4). 14-3-3 binding masks specific sequences of the target protein and therefore modulates target protein localization, phosphorylation

state, stability, and molecular interactions (1-4). 14-3-3 proteins may also induce target protein conformational changes that modify target protein function (4,5). Distinct temporal and spatial expression patterns of 14-3-3 isoforms have been observed in development and in acute response to extracellular signals and drugs, suggesting that 14-3-3 isoforms may perform different functions despite their sequence similarities (4). Several studies suggest that 14-3-3 isoforms are differentially regulated in cancer and neurological syndromes (2,3).

---

Note: This product is for in vitro research use only