

SFN Antibody

Catalog No: #32126

Package Size: #32126-1 50ul #32126-2 100ul

Orders: order@signalwayantibody.com

Support: tech@signalwayantibody.com

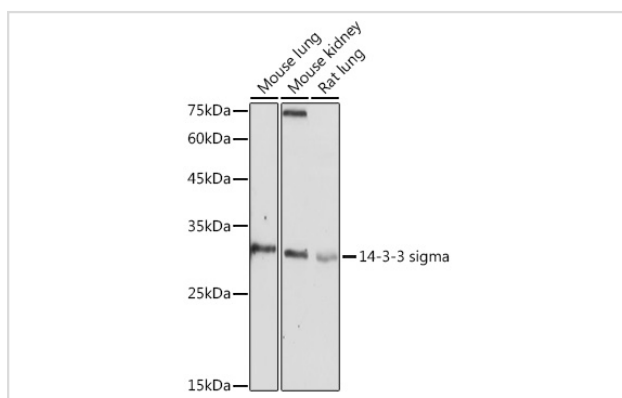
Description

Product Name	SFN Antibody
Host Species	Rabbit
Clonality	Polyclonal
Isotype	IgG
Purification	Affinity purification
Applications	WB,IHC
Species Reactivity	Human,Mouse,Rat
Specificity	The antibody detects endogenous level of total SFN protein.
Immunogen Type	Recombinant Protein
Immunogen Description	Recombinant fusion protein of human 14-3-3 sigma (NP_006133.1).
Target Name	SFN
Other Names	SFN;YWHAS;stratifin
Accession No.	Uniprot:P31947GenelD:2810
Uniprot	P31947
GenelD	2810
SDS-PAGE MW	28KDa
Concentration	1.0mg/ml
Formulation	PBS with 0.02% sodium azide,50% glycerol,pH7.3.
Storage	Store at -20°C. Avoid freeze / thaw cycles.

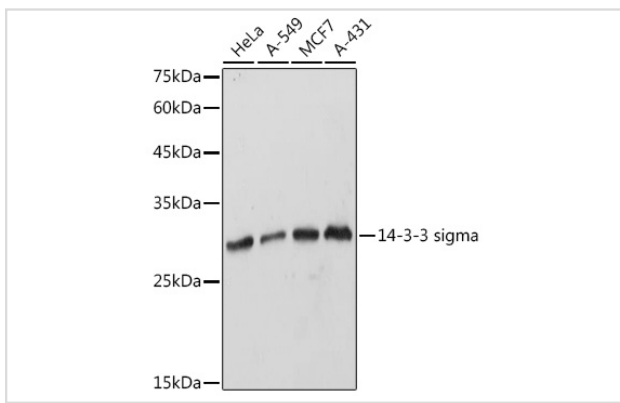
Application Details

WB □ 1:500 - 1:2000 IHC □ 1:50 - 1:200

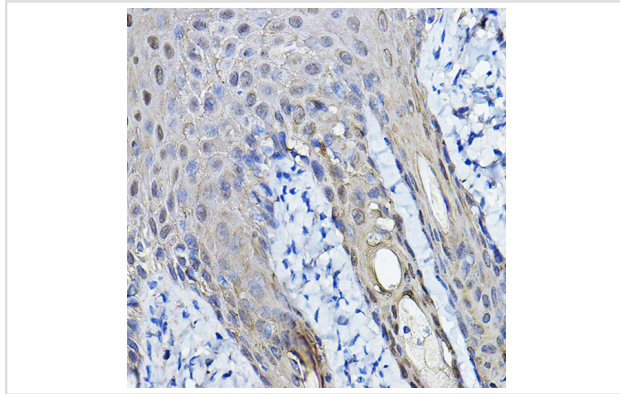
Images



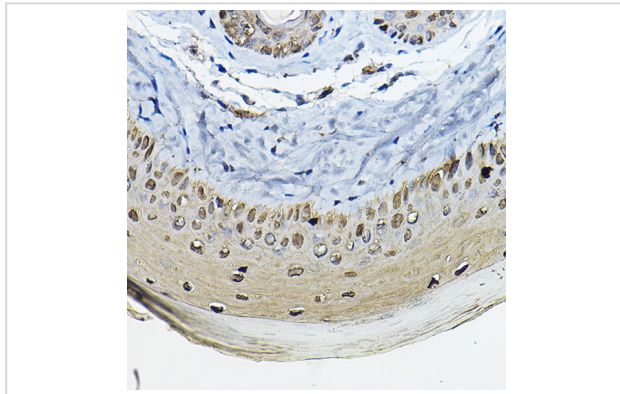
Western blot analysis of extracts of various cell lines, using 14-3-3 sigma antibody.



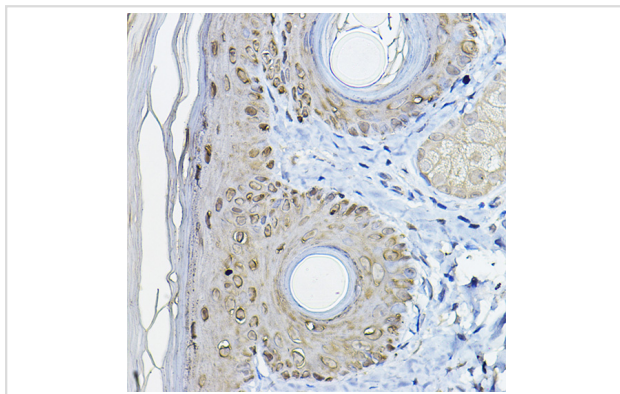
Western blot analysis of extracts of various cell lines, using 14-3-3 sigma antibody.



Immunohistochemistry of paraffin-embedded human skin using 14-3-3 sigma Rabbit pAb.



Immunohistochemistry of paraffin-embedded mouse skin using 14-3-3 sigma Rabbit pAb.



Immunohistochemistry of paraffin-embedded rat skin using 14-3-3 sigma Rabbit pAb.

Background

Adapter protein implicated in the regulation of a large spectrum of both general and specialized signaling pathways. Binds to a large number of partners, usually by recognition of a phosphoserine or phosphothreonine motif. Binding generally results in the modulation of the activity of the binding partner. When bound to KRT17, regulates protein synthesis and epithelial cell growth by stimulating Akt/mTOR pathway. May also regulate MDM2 autoubiquitination and degradation and thereby activate p53/TP53.

Note: This product is for in vitro research use only