

## MTAP Antibody

Catalog No: #32132

Package Size: #32132-1 50ul #32132-2 100ul

Orders: [order@signalwayantibody.com](mailto:order@signalwayantibody.com)Support: [tech@signalwayantibody.com](mailto:tech@signalwayantibody.com)

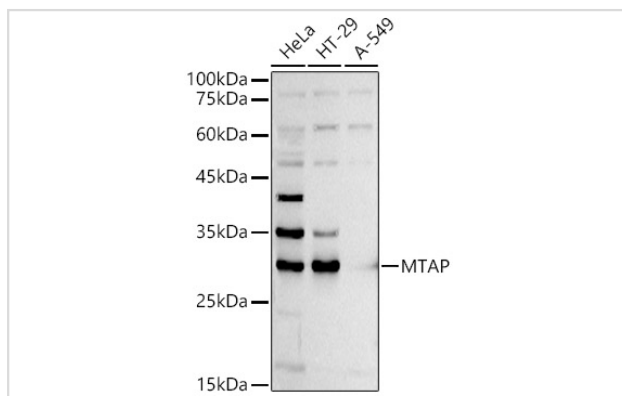
## Description

Product Name	MTAP Antibody
Host Species	Rabbit
Clonality	Polyclonal
Isotype	IgG
Purification	Affinity purification
Applications	WB,IHC
Species Reactivity	Human,Mouse,Rat
Specificity	The antibody detects endogenous level of total MTAP protein.
Immunogen Type	Recombinant Protein
Immunogen Description	Recombinant fusion protein of human MTAP (NP_002442.2).
Target Name	MTAP
Other Names	MTAP;BDMF;DMSFH;DMSMFH;HEL-249;LGMBF;MSAP;c86fus
Accession No.	Uniprot:Q13126GeneID:4507
Uniprot	Q13126
GeneID	4507
SDS-PAGE MW	29KDa
Concentration	1.0mg/ml
Formulation	PBS with 0.02% sodium azide,50% glycerol,pH7.3.
Storage	Store at -20°C. Avoid freeze / thaw cycles.

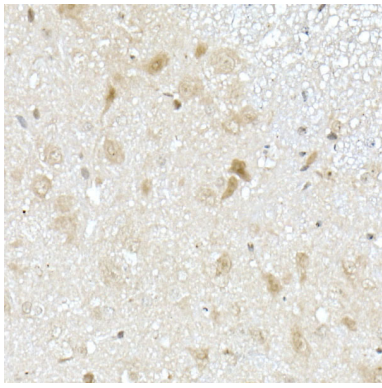
## Application Details

WB 1:500 - 1:2000 IHC 1:50 - 1:200

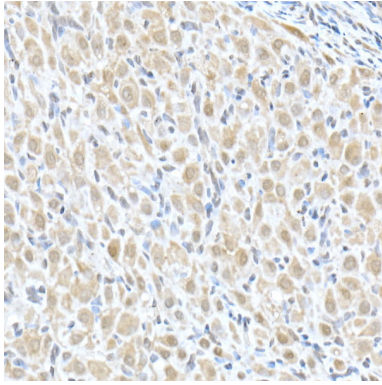
## Images



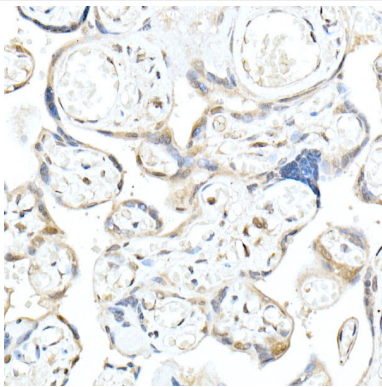
Western blot analysis of extracts of various cell lines, using MTAP antibody.



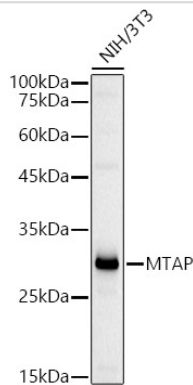
Immunohistochemistry of paraffin-embedded mouse spinal cord using MTAP Rabbit pAb.



Immunohistochemistry of paraffin-embedded rat ovary using MTAP Rabbit pAb.



Immunohistochemistry of paraffin-embedded human placenta using MTAP Rabbit pAb.



Western blot analysis of extracts of NIH/3T3 cells, using MTAP antibody.

## Background

This gene encodes an enzyme that plays a major role in polyamine metabolism and is important for the salvage of both adenine and methionine. The encoded enzyme is deficient in many cancers because this gene and the tumor suppressor p16 gene are co-deleted. Multiple alternatively spliced transcript variants have been described for this gene, but their full-length natures remain unknown.

---

Note: This product is for in vitro research use only