

MCM2 Antibody

Catalog No: #32134

Package Size: #32134-1 50ul #32134-2 100ul

Orders: order@signalwayantibody.com

Support: tech@signalwayantibody.com

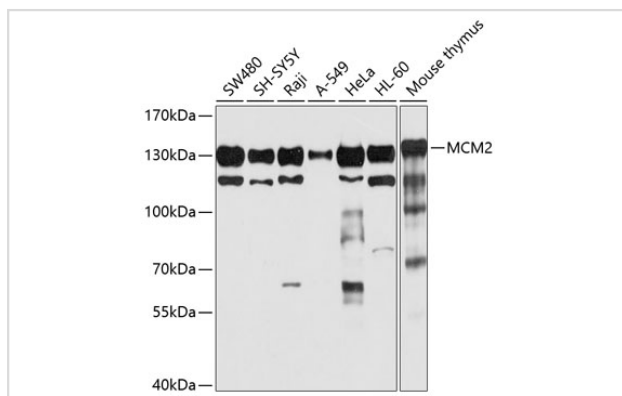
Description

| | |
|-----------------------|--|
| Product Name | MCM2 Antibody |
| Host Species | Rabbit |
| Clonality | Polyclonal |
| Isotype | IgG |
| Purification | Affinity purification |
| Applications | WB |
| Species Reactivity | Human,Mouse |
| Specificity | The antibody detects endogenous level of total MCM2 protein. |
| Immunogen Type | Recombinant Protein |
| Immunogen Description | Recombinant fusion protein of human MCM2 (NP_004517.2). |
| Target Name | MCM2 |
| Other Names | MCM2;BM28;CCNL1;CDCL1;D3S3194;DFNA70;MITOTIN;cdc19 |
| Accession No. | Uniprot:P49736GenelD:4171 |
| Uniprot | P49736 |
| GenelD | 4171 |
| SDS-PAGE MW | 130kDa |
| Concentration | 1.0mg/ml |
| Formulation | PBS with 0.02% sodium azide,50% glycerol,pH7.3. |
| Storage | Store at -20°C. Avoid freeze / thaw cycles. |

Application Details

WB □ 1:500 - 1:2000

Images



Western blot analysis of extracts of various cell lines, using MCM2 antibody.

Background

The protein encoded by this gene is one of the highly conserved mini-chromosome maintenance proteins (MCM) that are involved in the initiation of eukaryotic genome replication. The hexameric protein complex formed by MCM proteins is a key component of the pre-replication complex (pre_RC) and may be involved in the formation of replication forks and in the recruitment of other DNA replication related proteins. This protein forms a complex with MCM4, 6, and 7, and has been shown to regulate the helicase activity of the complex. This protein is phosphorylated, and thus regulated by, protein kinases CDC2 and CDC7. Multiple alternatively spliced transcript variants have been found, but the full-length nature of some variants has not been defined.

Note: This product is for in vitro research use only